



Transformer

by ABB



1M000000

Catalog Number **Type** **QL**
9T10C1348

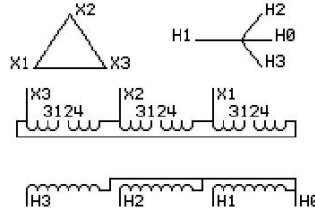
300.0 KVA 60 HZ 3 PH 5.1 % IMP
40 C AMB. 150 C RISE 220 C SYSTEM IS-19C

Note: Design is based on 300.0KVA & 115C Rise 5% Imp.

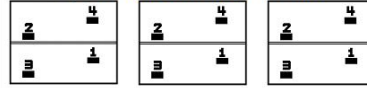
PRIMARY (X) 208 VOLTS (LINE-LINE)
SECONDARY (H) 480 VOLTS (LINE-LINE)
277 VOLTS (LINE-NEUTRAL)

JUMPER CONNECTION

TAP	VOLTS
1-2	216
2-3	208
3-4	200



COIL TAP ARRANGEMENT



NET WGT **INSPECTION & FINAL TEST**
2150 LB **975.2 Kg**
89737 **NOG**
DX78C **N137!**
 091021



ENCLOSURE TYPE 2 (IP20). OR RAINPROOF TYPE 3R (IP22) WHEN PROVIDED SHIELD 9T18Y107G06

ASSEMBLED IN MEXICO

BEFORE HANDLING, INSTALLING AND OPERATING, SEE INSTRUCTION 475A667AAP009
COPPER CONDUCTOR PRIMARY: 10 KV BIL SECONDARY: 10 KV BIL
IN ACCORDANCE WITH NEC SECTION 450-9, ALLOW AT LEAST SIX INCHES CLEARANCE FOR VENTILATION.
CHECK ADDITIONAL NEC AND LOCAL CODE

Note:

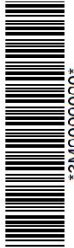
Outline: 303B112GEDXP78C

NEMA CLASS AA DRY TYPE TRANSFORMER

Meets DOE 2016 efficiency



2M000000



3M000000