



# Transformer

by ABB



\*1M000000\*

**Catalog Number**      **Type QL**  
**9T10C1348G02**

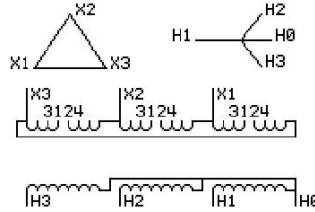
300.0 KVA    60 HZ    3 PH    5.1 % IMP  
40 C AMB.    150 C RISE    220 C SYSTEM    IS-19C

Note: Design is based on 300.0KVA & 115C Rise 5% Imp.

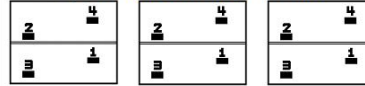
PRIMARY (X)      208 VOLTS (LINE-LINE)  
SECONDARY (H)    480 VOLTS (LINE-LINE)  
                             277 VOLTS (LINE-NEUTRAL)

**JUMPER CONNECTION**

TAP	VOLTS
1-2	216
2-3	208
3-4	200



**COIL TAP ARRANGEMENT**



**NET WGT**      **INSPECTION & FINAL TEST**  
2150 LB  
975.2 Kg      **NOG**  
89737      **N137!**  
DX78C      **091021**



ENCLOSURE TYPE 2 (IP20). OR RAINPROOF TYPE 3R (IP22) WHEN PROVIDED SHIELD 9T18Y107G06

ASSEMBLED IN MEXICO

**BEFORE HANDLING, INSTALLING AND OPERATING, SEE INSTRUCTION 475A667AAP009**  
COPPER CONDUCTOR      PRIMARY: 10 KV BIL      SECONDARY: 10 KV BIL  
IN ACCORDANCE WITH NEC SECTION 450-9, ALLOW AT LEAST SIX INCHES CLEARANCE FOR VENTILATION.  
CHECK ADDITIONAL NEC AND LOCAL CODE

Note:

Outline: 303B112GEDXP78C

NEMA CLASS AA DRY TYPE TRANSFORMER

Meets DOE 2016 efficiency



\*2M000000\*



\*3M000000\*