



# Transformer

—  
by ABB



\*1M000000\*

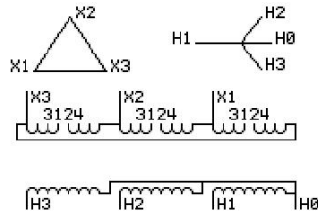
**Catalog Number**      **Type QL**

**9T10C1348G31**

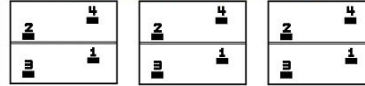
300.0 KVA    60 HZ    3 PH    5 % IMP  
40 C AMB.    115 C RISE    220 C SYSTEM    IS-19C

JUMPER CONNECTION	
TAP	VOLTS
1-2	216
2-3	208
3-4	200

PRIMARY (X)    208 VOLTS (LINE-LINE)  
 SECONDARY (H)    480 VOLTS (LINE-LINE)  
                               277 VOLTS (LINE-NEUTRAL)



### COIL TAP ARRANGEMENT



**NET WGT**      **INSPECTION & FINAL TEST**  
 2150 LB      TEST  
 975.2 Kg      **NOG**  
 89737      N139!  
 DX78C      092021



ENCLOSURE TYPE 2 (IP20). OR RAINPROOF TYPE 3R (IP22) WHEN PROVIDED SHIELD 9T18Y107G06

ASSEMBLED IN MEXICO

**BEFORE HANDLING, INSTALLING AND OPERATING, SEE INSTRUCTION 475A667AAP009**  
 COPPER CONDUCTOR    PRIMARY: 10 KV BIL    SECONDARY: 10 KV BIL  
 IN ACCORDANCE WITH NEC SECTION 450-9, ALLOW AT LEAST SIX INCHES CLEARANCE FOR VENTILATION.  
 CHECK ADDITIONAL NEC AND LOCAL CODE

Note:

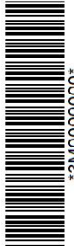
Outline: 303B112GEDXP78C

NEMA CLASS AA DRY TYPE TRANSFORMER

Meets DOE 2016 efficiency



\*2M000000\*



\*3M000000\*