



Transformer

by ABB



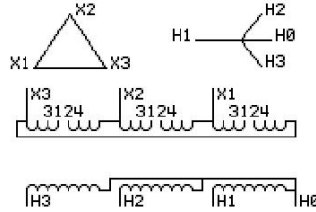
1M000000

Catalog Number 9T10C1349 **Type** QL

500.0 KVA 60 HZ 3 PH 3.7 % IMP
40 C AMB. 150 C RISE 220 C SYSTEM IS-19C

JUMPER CONNECTION
TAP VOLTS
1-2 228
2-3 218
3-4 208

PRIMARY (X) 208 VOLTS (LINE-LINE)
SECONDARY (H) 480 VOLTS (LINE-LINE)
277 VOLTS (LINE-NEUTRAL)



COIL TAP ARRANGEMENT



NET WGT 3720 LB
1687.4 Kg
INSPECTION & FINAL TEST NOG N137!
DX79C 091021



ENCLOSURE TYPE 2 (IP20). OR RAINPROOF TYPE 3R (IP22) WHEN PROVIDED SHIELD 9T18Y1079G06

ASSEMBLED IN MEXICO

BEFORE HANDLING, INSTALLING AND OPERATING, SEE INSTRUCTION 475A667AAP009
COPPER CONDUCTOR PRIMARY: 10 KV BIL SECONDARY: 10 KV BIL
IN ACCORDANCE WITH NEC SECTION 450-9, ALLOW AT LEAST SIX INCHES CLEARANCE FOR VENTILATION.
CHECK ADDITIONAL NEC AND LOCAL CODE

Note:

Outline: 303B112GEDXP79C

NEMA CLASS AA DRY TYPE TRANSFORMER

Meets DOE 2016 efficiency



2M000000



3M000000