



# Transformer

by ABB



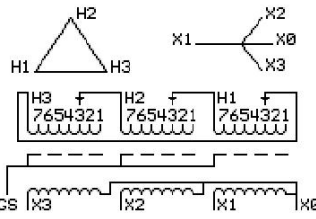
\*1M000000\*

**Catalog Number**      **Type QL**  
**9T10C1453G34**

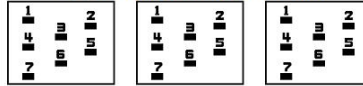
45.0 KVA    60 HZ    3 PH    4.3 % IMP  
40 C AMB.    115 C RISE    220 C SYSTEM    IS-19C

PRIMARY (H)    208 VOLTS (LINE-LINE)  
SECONDARY (X)    208 VOLTS (LINE-LINE)  
                              120 VOLTS (LINE-NEUTRAL)

JUMPER CONNECTION	TAP VOLTS
1	218
2	215
3	208
4	204
5	197
6	193
7	186



### COIL TAP ARRANGEMENT



<b>NET WGT</b>	<b>INSPECTION &amp; FINAL TEST</b>
661 LB	
299.8 Kg	<b>NOG</b>
89752	<b>N139!</b>
UY74C	<b>092021</b>



LISTED 769G

ELECTROSTATIC GROUND SHIELD IN EACH PHASE

ENCLOSURE TYPE 2 (IP20). OR RAINPROOF TYPE 3R (IP22) WHEN PROVIDED SHIELD 9T18Y1074G06

ASSEMBLED IN MEXICO

**BEFORE HANDLING, INSTALLING AND OPERATING, SEE INSTRUCTION 475A667AAP001**  
 COPPER CONDUCTOR      PRIMARY: 10 KV BIL      SECONDARY: 10 KV BIL  
 IN ACCORDANCE WITH NEC SECTION 450-9, ALLOW AT LEAST SIX INCHES CLEARANCE FOR VENTILATION.  
 CHECK ADDITIONAL NEC AND LOCAL CODE

X3    H3    X2    H2    X1    H1

Note: X0 at the bottom

Outline: 303B111GEUY74C

NEMA CLASS AA DRY TYPE TRANSFORMER

Meets DOE 2016 efficiency

X3 H3 X2 H2 X1 H1  
 X3 H3 X2 H2 X1 H1  
 X3 H3 X2 H2 X1 H1



\*2M000000\*



\*3M000000\*

X0