



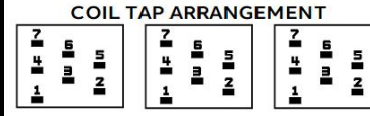
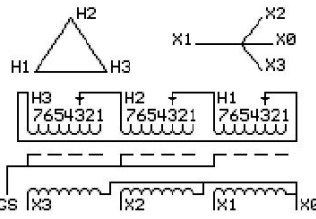
**Catalog Number**      **Type QL**  
**9T10C1454G33**

75.0 KVA    60 HZ    3 PH    4.5 % IMP  
40 C AMB.    115 C RISE    220 C SYSTEM    IS-19C

PRIMARY (H)    208 VOLTS (LINE-LINE)  
SECONDARY (X)    208 VOLTS (LINE-LINE)  
                          120 VOLTS (LINE-NEUTRAL)

**JUMPER CONNECTION**

TAP	VOLTS
1	220
2	215
3	208
4	205
5	195
6	190
7	185



**NET WGT**  
748 LB  
339.3 Kg  
89756  
UX74C

**INSPECTION & FINAL TEST**  
NOG  
N139!  
092021



ELECTROSTATIC GROUND SHIELD IN EACH PHASE

ENCLOSURE TYPE 2 (IP20). OR RAINPROOF TYPE 3R (IP22) WHEN PROVIDED SHIELD 9T18Y1074G06

**ASSEMBLED IN MEXICO**

**BEFORE HANDLING, INSTALLING AND OPERATING, SEE INSTRUCTION 475A667AAP001**  
COPPER CONDUCTOR    PRIMARY: 10 KV BIL    SECONDARY: 10 KV BIL  
IN ACCORDANCE WITH NEC SECTION 450-9, ALLOW AT LEAST SIX INCHES CLEARANCE FOR VENTILATION.  
**CHECK ADDITIONAL NEC AND LOCAL CODE**

**X3   H3   X2   H2   X1   H1**

Note: X0 at the bottom

Outline: 303B111GEUXP74C

NEMA CLASS AA DRY TYPE TRANSFORMER

Meets DOE 2016 efficiency

**X0**

	<b>X3</b>	<b>H3</b>	<b>X2</b>	<b>H2</b>	<b>X1</b>	<b>H1</b>
*2M000000*	-	-	-	-	-	-
	<b>X3</b>	<b>H3</b>	<b>X2</b>	<b>H2</b>	<b>X1</b>	<b>H1</b>
*3M000000*	-	-	-	-	-	-