



# Transformer

—  
by ABB



\*1M000000\*

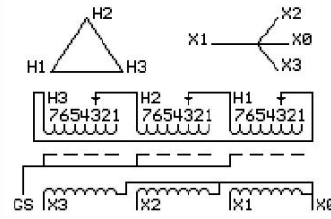
**Catalog Number**      **Type QL**  
**9T10C1454G34**

**75.0 KVA    60 HZ    3 PH    4.5 % IMP**  
**40 C AMB.    115 C RISE    220 C SYSTEM    IS-19C**

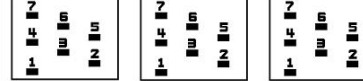
*Note: Design is based on 75.00KVA & 115C Rise 4.5% Imp.*

**PRIMARY (H)    208 VOLTS (LINE-LINE)**  
**SECONDARY (X)    208 VOLTS (LINE-LINE)**  
**120 VOLTS (LINE-NEUTRAL)**

JUMPER CONNECTION	TAP VOLTS
1	220
2	215
3	208
4	205
5	195
6	190
7	185



### COIL TAP ARRANGEMENT



<b>NET WGT</b>	<b>INSPECTION &amp; FINAL TEST</b>
748 LB	
339.3 Kg	<b>NOG</b>
89756	<b>N139!</b>
UX74C	<b>092021</b>



LISTED 769G

ELECTROSTATIC GROUND SHIELD IN EACH PHASE

ENCLOSURE TYPE 2 (IP20). OR RAINPROOF TYPE 3R (IP22) WHEN PROVIDED SHIELD 9T18Y1074G06

ASSEMBLED IN MEXICO

**BEFORE HANDLING, INSTALLING AND OPERATING, SEE INSTRUCTION 475A667AAP001**  
**COPPER CONDUCTOR    PRIMARY: 10 KV BIL    SECONDARY: 10 KV BIL**  
**IN ACCORDANCE WITH NEC SECTION 450-9, ALLOW AT LEAST SIX INCHES CLEARANCE FOR VENTILATION.**  
**CHECK ADDITIONAL NEC AND LOCAL CODE**

**X3    H3    X2    H2    X1    H1**

Note: X0 at the bottom

Outline: 303B111GEUXP74C

NEMA CLASS AA DRY TYPE TRANSFORMER

Meets DOE 2016 efficiency

X3 H3 X2 H2 X1 H1  
 X3 H3 X2 H2 X1 H1  
 X3 H3 X2 H2 X1 H1



\*2M000000\*



\*3M000000\*

X0