



# Transformer

by ABB



\*1M000000\*

**Catalog Number**  
**9T10C1614G03**

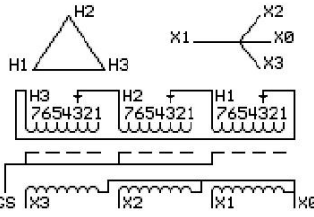
**Type** QL

75.0 KVA    60 HZ    3 PH    4.6 % IMP  
40 C AMB.    150 C RISE    220 C SYSTEM    IS-19C

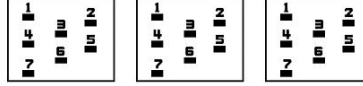
PRIMARY (H)    240 VOLTS (LINE-LINE)  
SECONDARY (X)    208 VOLTS (LINE-LINE)  
                          120 VOLTS (LINE-NEUTRAL)

**JUMPER CONNECTION**

TAP	VOLTS
1	254
2	245
3	240
4	236
5	227
6	222
7	218



**COIL TAP ARRANGEMENT**



<b>NET WGT</b>	<b>INSPECTION &amp; FINAL TEST</b>
661 LB	
299.8 Kg	<b>NOG</b>
89771	N139!
UY74C	092021



ELECTROSTATIC GROUND SHIELD IN EACH PHASE

ENCLOSURE TYPE 2 (IP20). OR RAINPROOF TYPE 3R (IP22) WHEN PROVIDED SHIELD 9T18Y1074G06

ASSEMBLED IN MEXICO

**BEFORE HANDLING, INSTALLING AND OPERATING, SEE INSTRUCTION 475A667AAP001**

COPPER CONDUCTOR    PRIMARY: 10 KV BIL    SECONDARY: 10 KV BIL

IN ACCORDANCE WITH NEC SECTION 450-9, ALLOW AT LEAST SIX INCHES CLEARANCE FOR VENTILATION.

CHECK ADDITIONAL NEC AND LOCAL CODE

X3	H3	X2	H2	X1	H1
-	-	-	-	-	-

Note: X0 at the bottom  
Outline: 303B111GEUY74C

NEMA CLASS AA DRY TYPE TRANSFORMER

Meets DOE 2016 efficiency

X3	H3	X2	H2	X1	H1
X3	H3	X2	H2	X1	H1