



# Transformer

by ABB

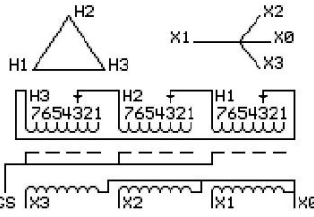


**Catalog Number** 9T10C2293G34  
**Type** QL

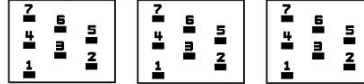
45.0 KVA 60 HZ 3 PH 3.2 % IMP  
40 C AMB. 115 C RISE 220 C SYSTEM IS-19C

PRIMARY (H) 575 VOLTS (LINE-LINE)  
SECONDARY (X) 208 VOLTS (LINE-LINE)  
120 VOLTS (LINE-NEUTRAL)

JUMPER CONNECTION	TAP VOLTS
1	604
2	590
3	575
4	562
5	547
6	533
7	519



### COIL TAP ARRANGEMENT



**NET WGT**  
480 LB  
217.7 Kg  
88902  
UX73C

**INSPECTION & FINAL TEST**  
NOG  
N137!  
091021



ELECTROSTATIC GROUND SHIELD IN EACH PHASE

ENCLOSURE TYPE 2 (IP20). OR RAINPROOF TYPE 3R (IP22) WHEN PROVIDED SHIELD 9T18Y1072G06

ASSEMBLED IN MEXICO

**BEFORE HANDLING, INSTALLING AND OPERATING, SEE INSTRUCTION 475A667AAP001**  
COPPER CONDUCTOR PRIMARY: 10 KV BIL SECONDARY: 10 KV BIL  
IN ACCORDANCE WITH NEC SECTION 450-9, ALLOW AT LEAST SIX INCHES CLEARANCE FOR VENTILATION.  
CHECK ADDITIONAL NEC AND LOCAL CODE

Note: X0 at the top

Outline: 303B111GEUXP73C

NEMA CLASS AA DRY TYPE TRANSFORMER

Meets DOE 2016 efficiency

X3	H3	X2	H2	X1	H1	-
X3	H3	X2	H2	X1	H1	-

Barcode: \*2M000000\*

Barcode: \*3M000000\*