



Transformer

by ABB



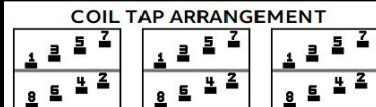
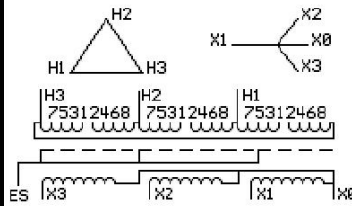
1M000000

Catalog Number **Type QL**
9T10C2295G34

112.5 KVA 60 HZ 3 PH 3.3 % IMP
40 C AMB. 115 C RISE 220 C SYSTEM IS-19C

PRIMARY (H) 575 VOLTS (LINE-LINE)
SECONDARY (X) 208 VOLTS (LINE-LINE)
 120 VOLTS (LINE-NEUTRAL)

JUMPER CONNECTION	
TAP	VOLTS
1-2	606
2-3	588
3-4	575
4-5	558
5-6	546
6-7	534
7-8	516



NET WGT
900 LB
408.2 Kg
89828
DX75C

INSPECTION & FINAL TEST
NOG
N137!
091021



ELECTROSTATIC GROUND SHIELD IN EACH PHASE

ENCLOSURE TYPE 2 (IP20). OR RAINPROOF TYPE 3R (IP22) WHEN PROVIDED SHIELD 9T18Y1074G06

BEFORE HANDLING, INSTALLING AND OPERATING, SEE INSTRUCTION 475A667AAP001

COPPER CONDUCTOR PRIMARY: 10 KV BIL SECONDARY: 10 KV BIL

IN ACCORDANCE WITH NEC SECTION 450-9, ALLOW AT LEAST SIX INCHES CLEARANCE FOR VENTILATION.

CHECK ADDITIONAL NEC AND LOCAL CODE

NEMA CLASS AA DRY TYPE TRANSFORMER

Meets DOE 2016 efficiency

ASSEMBLED IN MEXICO

X3 - X2 - X1 - -
- H3 - H2 - H1

Note: X0 at the bottom

Outline: 303B111GEDXP75C

X3 - X2 - X1 - - H1

X3 - X2 - X1 - - H1

X3 - H3 - H2 - H1

X3 - X2 - X1 - - H1

X3 - H3 - H2 - H1

X0

2M000000

3M000000