



Transformer

by ABB



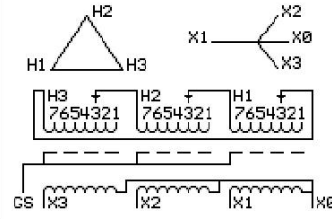
1M000000

Catalog Number **Type** QL
9T10C2304G34

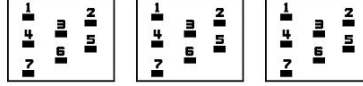
75.0 KVA 60 HZ 3 PH 3.6 % IMP
40 C AMB. 115 C RISE 220 C SYSTEM IS-19C

PRIMARY (H) 575 VOLTS (LINE-LINE)
SECONDARY (X) 480 VOLTS (LINE-LINE)
 277 VOLTS (LINE-NEUTRAL)

| JUMPER CONNECTION | TAP VOLTS |
|-------------------|-----------|
| 1 | 602 |
| 2 | 591 |
| 3 | 575 |
| 4 | 560 |
| 5 | 544 |
| 6 | 533 |
| 7 | 517 |



COIL TAP ARRANGEMENT



| NET WGT | INSPECTION & FINAL TEST |
|----------|-------------------------|
| 748 LB | |
| 339.3 Kg | NOG |
| 89830 | N139! |
| UX74C | 092021 |



LISTED 769G

ELECTROSTATIC GROUND SHIELD IN EACH PHASE

ENCLOSURE TYPE 2 (IP20). OR RAINPROOF TYPE 3R (IP22) WHEN PROVIDED SHIELD 9T18Y1074G06

ASSEMBLED IN MEXICO

BEFORE HANDLING, INSTALLING AND OPERATING, SEE INSTRUCTION 475A667AAP001
 COPPER CONDUCTOR PRIMARY: 10 KV BIL SECONDARY: 10 KV BIL
 IN ACCORDANCE WITH NEC SECTION 450-9, ALLOW AT LEAST SIX INCHES CLEARANCE FOR VENTILATION.
 CHECK ADDITIONAL NEC AND LOCAL CODE

X3 H3 X2 H2 X1 H1

Note: X0 at the bottom

Outline: 303B111GEUXP74C

NEMA CLASS AA DRY TYPE TRANSFORMER

Meets DOE 2016 efficiency

X3 H3 X2 H2 X1 H1
 - - - - - -
 X3 H3 X2 H2 X1 H1
 - - - - - -



2M000000



3M000000

X0