



Transformer

—
by ABB



1M000000

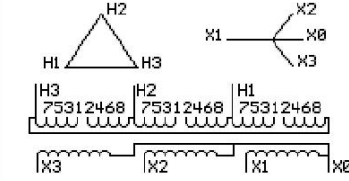
Catalog Number **Type QL**
9T10Z1174G61

75.0 KVA 60 HZ 3 PH 3.4 % IMP
40 C AMB. 80 C RISE 220 C SYSTEM IS-19C

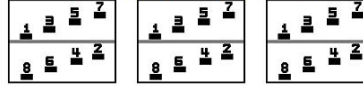
Note: Design is based on 112.5KVA & 150C Rise 5.1% Imp.

PRIMARY (H) 480 VOLTS (LINE-LINE)
SECONDARY (X) 480 VOLTS (LINE-LINE)
277 VOLTS (LINE-NEUTRAL)

JUMPER CONNECTION	
TAP	VOLTS
1-2	503
2-3	492
3-4	480
4-5	469
5-6	458
6-7	447
7-8	430



COIL TAP ARRANGEMENT



NET WGT	INSPECTION & FINAL TEST
790 LB	
358.3 Kg	NOG
89632	N137!
DY75C	091021



ENCLOSURE TYPE 2 (IP20). OR RAINPROOF TYPE 3R (IP22) WHEN PROVIDED SHIELD 9T18Y1174G06

ASSEMBLED IN MEXICO

BEFORE HANDLING, INSTALLING AND OPERATING, SEE INSTRUCTION 475A667AAP001
COPPER CONDUCTOR PRIMARY: 10 KV BIL SECONDARY: 10 KV BIL
IN ACCORDANCE WITH NEC SECTION 450-9, ALLOW AT LEAST SIX INCHES CLEARANCE FOR VENTILATION.
CHECK ADDITIONAL NEC AND LOCAL CODE

X3 - X2 - X1 - -
- H3 - H2 - H1
Note: X0 at the bottom

Outline: 303B111GEDYP75C

NEMA CLASS AA DRY TYPE TRANSFORMER

Meets DOE 2016 efficiency

X0

- H1

- H2

- H3

- X1

- X2

- X3