



Transformer

—
by ABB



1M000000

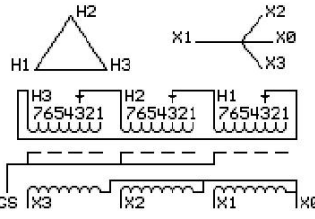
Catalog Number **Type QL**
9T11A1003G06

45.0 KVA 60 HZ 3 PH 3.3 % IMP
40 C AMB. 150 C RISE 220 C SYSTEM IS-19C

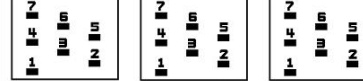
Note: Design is based on 45.00KVA & 150C Rise 3.3% Imp.

PRIMARY (H) 480 VOLTS (LINE-LINE)
SECONDARY (X) 208 VOLTS (LINE-LINE)
120 VOLTS (LINE-NEUTRAL)

JUMPER CONNECTION	TAP VOLTS
1	504
2	490
3	480
4	467
5	457
6	444
7	434



COIL TAP ARRANGEMENT



NET WGT	INSPECTION & FINAL TEST
444 LB	
201.4 Kg	NOG
88969	N137!
UX73A	091021



LISTED 769G

ELECTROSTATIC GROUND SHIELD IN EACH PHASE

ENCLOSURE TYPE 2 (IP20). OR RAINPROOF TYPE 3R (IP22) WHEN PROVIDED SHIELD 9T18Y1072G06
SUITABLE FOR NONSINUSOIDAL CURRENT LOAD WITH K-FACTOR NOT TO EXCEED 13

BEFORE HANDLING, INSTALLING AND OPERATING, SEE INSTRUCTION 475A667AAP001
ALUMINUM CONDUCTOR PRIMARY: 10 KV BIL SECONDARY: 10 KV BIL
IN ACCORDANCE WITH NEC SECTION 450-9, ALLOW AT LEAST SIX INCHES CLEARANCE FOR VENTILATION.
CHECK ADDITIONAL NEC AND LOCAL CODE

NEMA CLASS AA DRY TYPE TRANSFORMER

Meets DOE 2016 efficiency

ASSEMBLED IN MEXICO

X3 H3 X2 H2 X1 H1 X0

Note: standard

Outline: 303B111GEUXP73A

X0	-	-	-	-	-	-	-	-	-
X1	-	-	-	-	-	-	-	-	-
H1	-	-	-	-	-	-	-	-	-
X2	-	-	-	-	-	-	-	-	-
H2	-	-	-	-	-	-	-	-	-
X3	-	-	-	-	-	-	-	-	-
H3	-	-	-	-	-	-	-	-	-
X0	-	-	-	-	-	-	-	-	-
X1	-	-	-	-	-	-	-	-	-
H1	-	-	-	-	-	-	-	-	-
X2	-	-	-	-	-	-	-	-	-
H2	-	-	-	-	-	-	-	-	-
X3	-	-	-	-	-	-	-	-	-
H3	-	-	-	-	-	-	-	-	-
X0	-	-	-	-	-	-	-	-	-



2M000000



3M000000