



Transformer

by ABB



1M000000

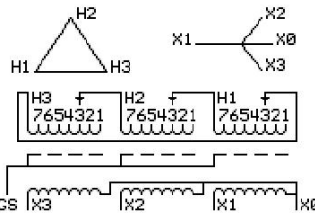
Catalog Number 9T11A1003G36 **Type** QL

45.0 KVA 60 HZ 3 PH 4.3 % IMP
40 C AMB. 115 C RISE 220 C SYSTEM IS-19C

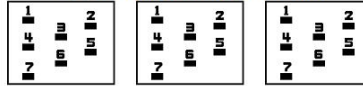
Note: Design is based on 45.00KVA & 80C Rise 4.3% Imp.

PRIMARY (H) 480 VOLTS (LINE-LINE)
SECONDARY (X) 208 VOLTS (LINE-LINE)
120 VOLTS (LINE-NEUTRAL)

JUMPER CONNECTION TAP	VOLTS
1	505
2	493
3	480
4	468
5	456
6	443
7	431



COIL TAP ARRANGEMENT



NET WGT 561 LB
254.5 Kg
89033 UY74A

INSPECTION & FINAL TEST
NOG N137!
091021



LISTED 769G

ELECTROSTATIC GROUND SHIELD IN EACH PHASE

ENCLOSURE TYPE 2 (IP20). OR RAINPROOF TYPE 3R (IP22) WHEN PROVIDED SHIELD 9T18Y1074G06
SUITABLE FOR NONSINUSOIDAL CURRENT LOAD WITH K-FACTOR NOT TO EXCEED 13

BEFORE HANDLING, INSTALLING AND OPERATING, SEE INSTRUCTION 475A667AAP001
ALUMINUM CONDUCTOR PRIMARY: 10 KV BIL SECONDARY: 10 KV BIL
IN ACCORDANCE WITH NEC SECTION 450-9, ALLOW AT LEAST SIX INCHES CLEARANCE FOR VENTILATION.
CHECK ADDITIONAL NEC AND LOCAL CODE

ASSEMBLED IN MEXICO

X3 H3 X2 H2 X1 H1

Note: X0 at the bottom

Outline: 303B111GEUYP74A

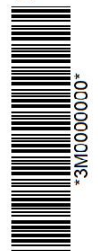
NEMA CLASS AA DRY TYPE TRANSFORMER

Meets DOE 2016 efficiency

X3 H3 X2 H2 X1 H1
X3 H3 X2 H2 X1 H1
X3 H3 X2 H2 X1 H1



2M000000



3M000000

X0