



Transformer

by ABB



1M000000

Catalog Number 9T11A1004G03

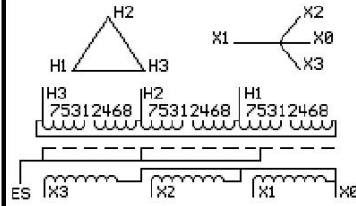
Type **QL**

75.0 KVA **60 HZ** **3 PH** **2.9 % IMP**
40 C AMB. 150 C RISE 220 C SYSTEM IS-19C

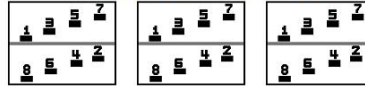
Note: Design is based on 112.5KVA & 150C Rise 4.1% Imp.

PRIMARY (H) **480 VOLTS (LINE-LINE)**
SECONDARY (X) **208 VOLTS (LINE-LINE)**
 120 VOLTS (LINE-NEUTRAL)

JUMPER CONNECTION	TAP VOLTS
1-2	503
2-3	494
3-4	480
4-5	467
5-6	458
6-7	445
7-8	431



COIL TAP ARRANGEMENT



NET WGT	INSPECTION & FINAL TEST
680 LB	TEST
308.4 Kg	NOG
89048	N137!
DY75A	091021



ELECTROSTATIC GROUND SHIELD IN EACH PHASE

ENCLOSURE TYPE 2 (IP20). OR RAINFOOF TYPE 3R (IP22) WHEN PROVIDED SHIELD 9T18Y1074G06
 SUITABLE FOR NONSINUSOIDAL CURRENT LOAD WITH K-FACTOR NOT TO EXCEED 13
BEFORE HANDLING, INSTALLING AND OPERATING, SEE INSTRUCTION 475A667AAP001
 ALUMINUM CONDUCTOR PRIMARY: 10 KV BIL SECONDARY: 10 KV BIL
 IN ACCORDANCE WITH NEC SECTION 450-9, ALLOW AT LEAST SIX INCHES CLEARANCE FOR VENTILATION.
 CHECK ADDITIONAL NEC AND LOCAL CODE

ASSEMBLED IN MEXICO

X3 - X2 - X1 - -
- H3 - H2 - H1
 Note: X0 at the bottom

Outline: 303B11GEDYP75A

NEMA CLASS AA DRY TYPE TRANSFORMER

Meets DOE 2016 efficiency

- - - - -
 X3 - X2 - X1 - - - H3 - H2 - H1
 X3 - X2 - X1 - - - H3 - H2 - H1
 X0