



Transformer

—
by ABB



1M000000

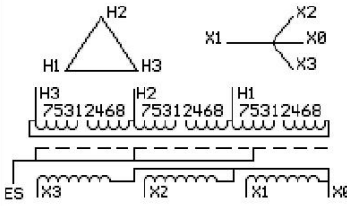
Catalog Number **Type QL**
9T11A1004G33

75.0 KVA 60 HZ 3 PH 2.9 % IMP
40 C AMB. 115 C RISE 220 C SYSTEM IS-19C

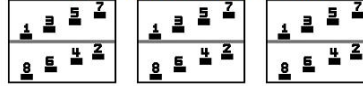
Note: Design is based on 112.5KVA & 150C Rise 4.1% Imp.

PRIMARY (H) 480 VOLTS (LINE-LINE)
SECONDARY (X) 208 VOLTS (LINE-LINE)
 120 VOLTS (LINE-NEUTRAL)

JUMPER CONNECTION	
TAP	VOLTS
1-2	503
2-3	494
3-4	480
4-5	467
5-6	458
6-7	445
7-8	431



COIL TAP ARRANGMENT



NET WGT	INSPECTION & FINAL TEST
680 LB	
308.4 Kg	NOG
89048	N137!
DY75A	091021



ELECTROSTATIC GROUND SHIELD IN EACH PHASE

ENCLOSURE TYPE 2 (IP20). OR RAINPROOF TYPE 3R (IP22) WHEN PROVIDED SHIELD 9T18Y1074G06

SUITABLE FOR NONSINUSOIDAL CURRENT LOAD WITH K-FACTOR NOT TO EXCEED 13

BEFORE HANDLING, INSTALLING AND OPERATING, SEE INSTRUCTION 475A667AAP001

ALUMINUM CONDUCTOR PRIMARY: 10 KV BIL SECONDARY: 10 KV BIL

IN ACCORDANCE WITH NEC SECTION 450-9, ALLOW AT LEAST SIX INCHES CLEARANCE FOR VENTILATION.

CHECK ADDITIONAL NEC AND LOCAL CODE

NEMA CLASS AA DRY TYPE TRANSFORMER

Meets DOE 2016 efficiency

ASSEMBLED IN MEXICO

X3 - X2 - X1 - -
- H3 - H2 - H1

Note: X0 at the bottom

Outline: 303B111GEDYP75A

X3 - X2 - X1 - - H3 - H2 - H1 X0

X3 - X2 - X1 - - H3 - H2 - H1 X0

2M000000

3M000000