



# Transformer

—  
by ABB



\*1M000000\*

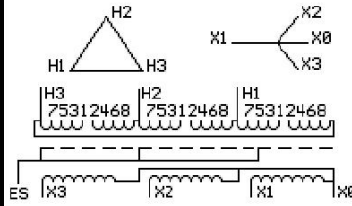
**Catalog Number**      **Type QL**  
**9T11A1004G34**

75.0 KVA    60 HZ    3 PH    2.9 % IMP  
40 C AMB.    115 C RISE    220 C SYSTEM    IS-19C

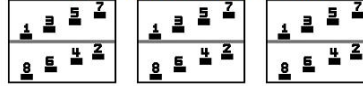
Note: Design is based on 112.5KVA & 150C Rise 4.1% Imp.

PRIMARY (H)      480 VOLTS (LINE-LINE)  
SECONDARY (X)    208 VOLTS (LINE-LINE)  
                          120 VOLTS (LINE-NEUTRAL)

JUMPER CONNECTION	
TAP	VOLTS
1-2	503
2-3	494
3-4	480
4-5	467
5-6	458
6-7	445
7-8	431



### COIL TAP ARRANGEMENT



<b>NET WGT</b> 680 LB 308.4 Kg 89048 DY75A	<b>INSPECTION &amp; FINAL TEST</b> NOG N137! 091021
--	--



ELECTROSTATIC GROUND SHIELD IN EACH PHASE

ENCLOSURE TYPE 2 (IP20). OR RAINPROOF TYPE 3R (IP22) WHEN PROVIDED SHIELD 9T18Y1074G06

SUITABLE FOR NONSINUSOIDAL CURRENT LOAD WITH K-FACTOR NOT TO EXCEED 13

BEFORE HANDLING, INSTALLING AND OPERATING, SEE INSTRUCTION 475A667AAP001

ALUMINUM CONDUCTOR    PRIMARY: 10 KV BIL    SECONDARY: 10 KV BIL

IN ACCORDANCE WITH NEC SECTION 450-9, ALLOW AT LEAST SIX INCHES CLEARANCE FOR VENTILATION.

CHECK ADDITIONAL NEC AND LOCAL CODE

NEMA CLASS AA DRY TYPE TRANSFORMER

Meets DOE 2016 efficiency

### ASSEMBLED IN MEXICO

X3 - X2 - X1 - -  
- H3 - H2 - H1

Note: X0 at the bottom

Outline: 303B11GEDYP75A

X3 - X2 - X1 - - H1

X3 - X2 - X1 - - H1

X3 - H3 - H2 - H1

X3 - X2 - X1 - - H1

X3 - H3 - H2 - H1

X0

\*2M000000\*

\*3M000000\*