



—
by ABB



1M000000

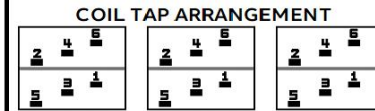
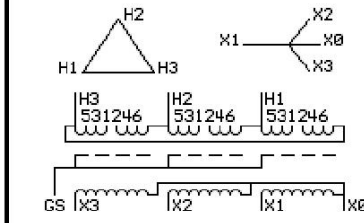
Catalog Number **9T11A1007G63** Type **QL**

225.0 KVA 60 HZ 3 PH 2.8 % IMP
40 C AMB. 80 C RISE 220 C SYSTEM IS-19C

JUMPER CONNECTION

TAP VOLTS	JUMPER CONNECTION
1-2	506
2-3	489
3-4	480
4-5	472
5-6	455

PRIMARY (H) 480 VOLTS (LINE-LINE)
SECONDARY (X) 208 VOLTS (LINE-LINE)
120 VOLTS (LINE-NEUTRAL)



NET WGT 2900 LB
1315.4 Kg
89897
DX79A

INSPECTION & FINAL TEST
NOG
N137!
091021



ELECTROSTATIC GROUND SHIELD IN EACH PHASE

ENCLOSURE TYPE 2 (IP20). OR RAINPROOF TYPE 3R (IP22) WHEN PROVIDED SHIELD 9T18Y1079G06
SUITABLE FOR NONSINUSOIDAL CURRENT LOAD WITH K-FACTOR NOT TO EXCEED 13
BEFORE HANDLING, INSTALLING AND OPERATING, SEE INSTRUCTION 475A667AAP009
ALUMINUM CONDUCTOR PRIMARY: 10 KV BIL SECONDARY: 10 KV BIL
IN ACCORDANCE WITH NEC SECTION 450-9, ALLOW AT LEAST SIX INCHES CLEARANCE FOR VENTILATION.
CHECK ADDITIONAL NEC AND LOCAL CODE

NEMA CLASS AA DRY TYPE TRANSFORMER

Meets DOE 2016 efficiency

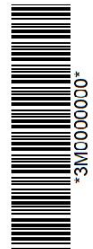
ASSEMBLED IN MEXICO

Note:

Outline: 303B112GEDXP79A



2M000000



3M000000