



# Transformer

by ABB



\*1M000000\*

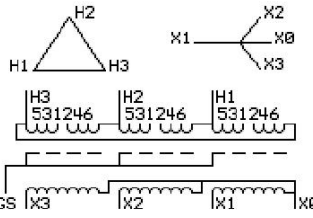
**Catalog Number**      **Type QL**  
**9T11A1008G03**

**300.0 KVA    60 HZ    3 PH    3.1 % IMP**  
**40 C AMB.    150 C RISE    220 C SYSTEM    IS-19C**

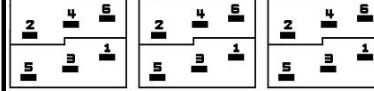
*Note: Design is based on 500.0KVA & 150C Rise 5.2% Imp.*

**PRIMARY (H)    480 VOLTS (LINE-LINE)**  
**SECONDARY (X)    208 VOLTS (LINE-LINE)**  
**120 VOLTS (LINE-NEUTRAL)**

JUMPER CONNECTION	
TAP	VOLTS
1-2	506
2-3	489
3-4	480
4-5	472
5-6	455



### COIL TAP ARRANGEMENT



ELECTROSTATIC GROUND SHIELD IN EACH PHASE

<b>NET WGT</b>	<b>INSPECTION &amp; FINAL TEST</b>
2713 LB	
1230.6 Kg	<b>NOG</b>
89090	<b>N139!</b>
DY79A	<b>092021</b>



ENCLOSURE TYPE 2 (IP20). OR RAINPROOF TYPE 3R (IP22) WHEN PROVIDED SHIELD 9T18Y1079G06

SUITABLE FOR NONSINUSOIDAL CURRENT LOAD WITH K-FACTOR NOT TO EXCEED 13

BEFORE HANDLING, INSTALLING AND OPERATING, SEE INSTRUCTION 475A667AAP009

ALUMINUM CONDUCTOR    PRIMARY: 10 KV BIL    SECONDARY: 10 KV BIL

IN ACCORDANCE WITH NEC SECTION 450-9, ALLOW AT LEAST SIX INCHES CLEARANCE FOR VENTILATION.

CHECK ADDITIONAL NEC AND LOCAL CODE

ASSEMBLED IN MEXICO

Note:

Outline: 303B112GEDYP79A

NEMA CLASS AA DRY TYPE TRANSFORMER

Meets DOE 2016 efficiency



\*2M000000\*



\*3M000000\*