



Transformer

—
by ABB



1M000000

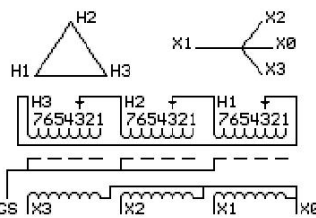
Catalog Number **Type** **QL**
9T11A1021G03

15.0 KVA **60 HZ** **3 PH** **3.8 % IMP**
40 C AMB. **150 C RISE** **220 C SYSTEM** **IS-19C**

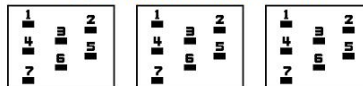
Note: Design is based on 15.00KVA & 150C Rise 3.8% Imp.

PRIMARY (H) **480 VOLTS (LINE-LINE)**
SECONDARY (X) **220 VOLTS (LINE-LINE)**
 127 VOLTS (LINE-NEUTRAL)

JUMPER CONNECTION	TAP VOLTS
1	504
2	491
3	480
4	468
5	455
6	445
7	432



COIL TAP ARRANGEMENT



NET WGT	INSPECTION & FINAL TEST
231 LB	
104.8 Kg	NOG
89101	N139!
UX71A	092021



LISTED 769G

ELECTROSTATIC GROUND SHIELD IN EACH PHASE

ENCLOSURE TYPE 2 (IP20). OR RAINPROOF TYPE 3R (IP22) WHEN PROVIDED SHIELD 9T18Y1071G06

SUITABLE FOR NONSINUSOIDAL CURRENT LOAD WITH K-FACTOR NOT TO EXCEED 13

BEFORE HANDLING, INSTALLING AND OPERATING, SEE INSTRUCTION 475A667AAP001

ALUMINUM CONDUCTOR PRIMARY: 10 KV BIL SECONDARY: 10 KV BIL

IN ACCORDANCE WITH NEC SECTION 450-9, ALLOW AT LEAST SIX INCHES CLEARANCE FOR VENTILATION.

CHECK ADDITIONAL NEC AND LOCAL CODE

ASSEMBLED IN MEXICO

X3 H3 X2 H2 X1 H1 X0

Note: **standard**

Outline: 303B111GEUXP71A

NEMA CLASS AA DRY TYPE TRANSFORMER

Meets DOE 2016 efficiency

X0
X1
H1
H2
X2
H3



2M000000

X0
H1
H2
X2
H3



3M000000