



Transformer

by ABB



1M000000

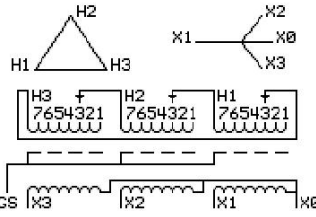
Catalog Number 9T11A1022G03
Type QL

30.0 KVA 60 HZ 3 PH 2.3 % IMP
 40 C AMB. 150 C RISE 220 C SYSTEM IS-19C

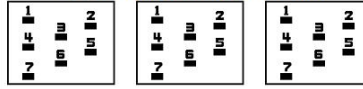
Note: Design is based on 45.00KVA & 150C Rise 3.5% Imp.

PRIMARY (H) 480 VOLTS (LINE-LINE)
SECONDARY (X) 220 VOLTS (LINE-LINE)
 127 VOLTS (LINE-NEUTRAL)

| JUMPER CONNECTION | TAP VOLTS |
|-------------------|-----------|
| 1 | 505 |
| 2 | 492 |
| 3 | 480 |
| 4 | 469 |
| 5 | 456 |
| 6 | 443 |
| 7 | 433 |



COIL TAP ARRANGEMENT



NET WGT 444 LB
 201.4 Kg
 88729
 UX73A

INSPECTION & FINAL TEST
 NOG
 N137!
 091021



ELECTROSTATIC GROUND SHIELD IN EACH PHASE

ENCLOSURE TYPE 2 (IP20). OR RAINPROOF TYPE 3R (IP22) WHEN PROVIDED SHIELD 9T18Y1072G06
 SUITABLE FOR NONSINUSOIDAL CURRENT LOAD WITH K-FACTOR NOT TO EXCEED 13

BEFORE HANDLING, INSTALLING AND OPERATING, SEE INSTRUCTION 475A667AAP001
 ALUMINUM CONDUCTOR PRIMARY: 10 KV BIL SECONDARY: 10 KV BIL
 IN ACCORDANCE WITH NEC SECTION 450-9, ALLOW AT LEAST SIX INCHES CLEARANCE FOR VENTILATION.
 CHECK ADDITIONAL NEC AND LOCAL CODE

ASSEMBLED IN MEXICO

X3 H3 X2 H2 X1 H1 X0

Note: standard

Outline: 303B111GEUXP73A

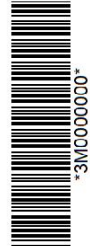
NEMA CLASS AA DRY TYPE TRANSFORMER

Meets DOE 2016 efficiency

X0
 X1
 H1
 X2
 H2
 X3
 H3
 X0
 X1
 H1
 X2
 H2
 X3
 H3



2M000000



3M000000