



Transformer

by ABB



1M000000

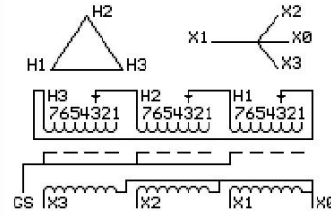
Catalog Number 9T11A1051G03 **Type** QL

15.0 KVA 60 HZ 3 PH 4.3 % IMP
40 C AMB. 150 C RISE 220 C SYSTEM IS-19C

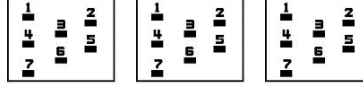
Note: Design is based on 15.00KVA & 150C Rise 4.3% Imp.

PRIMARY (H) 480 VOLTS (LINE-LINE)
SECONDARY (X) 240 VOLTS (LINE-LINE)
139 VOLTS (LINE-NEUTRAL)

JUMPER CONNECTION TAP	VOLTS
1	504
2	491
3	480
4	468
5	456
6	443
7	432



COIL TAP ARRANGEMENT



NET WGT 231 LB
104.8 Kg
89117
UX71A

INSPECTION & FINAL TEST
NOG
N139!
092021



LISTED 769G

ELECTROSTATIC GROUND SHIELD IN EACH PHASE

ENCLOSURE TYPE 2 (IP20). OR RAINPROOF TYPE 3R (IP22) WHEN PROVIDED SHIELD 9T18Y1071G06

SUITABLE FOR NONSINUSOIDAL CURRENT LOAD WITH K-FACTOR NOT TO EXCEED 13

BEFORE HANDLING, INSTALLING AND OPERATING, SEE INSTRUCTION 475A667AAP001

ALUMINUM CONDUCTOR PRIMARY: 10 KV BIL SECONDARY: 10 KV BIL

IN ACCORDANCE WITH NEC SECTION 450-9, ALLOW AT LEAST SIX INCHES CLEARANCE FOR VENTILATION.

CHECK ADDITIONAL NEC AND LOCAL CODE

NEMA CLASS AA DRY TYPE TRANSFORMER

Meets DOE 2016 efficiency

ASSEMBLED IN MEXICO

X3 H3 X2 H2 X1 H1 X0

Note: standard

Outline: 303B111GEUXP71A

X0	-	-	-	-	-	-	-
H1	-	-	-	-	-	-	-
X1	-	-	-	-	-	-	-
H2	-	-	-	-	-	-	-
X2	-	-	-	-	-	-	-
H3	-	-	-	-	-	-	-
X3	-	-	-	-	-	-	-



2M000000



3M000000