



—
by ABB



1M000000

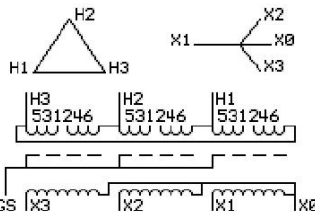
Catalog Number **Type QL**
9T11A1087G63

225.0 KVA 60 HZ 3 PH 4.4 % IMP
40 C AMB. 80 C RISE 220 C SYSTEM IS-19C

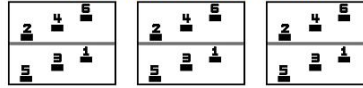
JUMPER CONNECTION

TAP	VOLTS
1-2	501
2-3	495
3-4	480
4-5	468
5-6	455

PRIMARY (H) 480 VOLTS (LINE-LINE)
 SECONDARY (X) 400 VOLTS (LINE-LINE)
 231 VOLTS (LINE-NEUTRAL)



COIL TAP ARRANGEMENT



ELECTROSTATIC GROUND SHIELD IN EACH PHASE

ENCLOSURE TYPE 2 (IP20). OR RAINPROOF TYPE 3R (IP22) WHEN PROVIDED SHIELD 9T18Y1079G06
 SUITABLE FOR NONSINUSOIDAL CURRENT LOAD WITH K-FACTOR NOT TO EXCEED 13

BEFORE HANDLING, INSTALLING AND OPERATING, SEE INSTRUCTION 475A667AAP009
 ALUMINUM CONDUCTOR PRIMARY: 10 KV BIL SECONDARY: 10 KV BIL
 IN ACCORDANCE WITH NEC SECTION 450-9, ALLOW AT LEAST SIX INCHES CLEARANCE FOR VENTILATION.
 CHECK ADDITIONAL NEC AND LOCAL CODE

NEMA CLASS AA DRY TYPE TRANSFORMER

Meets DOE 2016 efficiency

ASSEMBLED IN MEXICO

Note:

Outline: 303B112GEDYP79A

NET WGT **INSPECTION & FINAL TEST**
 2713 LB 1230.6 Kg
 89908 **NOG**
 DY79A **N139!**
 092021



LISTED 769G



2M000000



3M000000