



Transformer

by ABB



1M000000

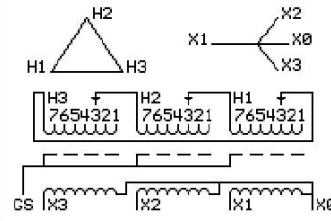
Catalog Number **Type QL**
9T11A1452G63

30.0 KVA **60 HZ** **3 PH** **3.1 % IMP**
40 C AMB. **80 C RISE** **220 C SYSTEM** **IS-19C**

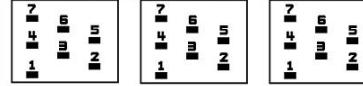
Note: Design is based on 45.00KVA & 150C Rise 4.9% Imp.

PRIMARY (H) **208 VOLTS (LINE-LINE)**
SECONDARY (X) **208 VOLTS (LINE-LINE)**
 120 VOLTS (LINE-NEUTRAL)

JUMPER CONNECTION	TAP VOLTS
1	219
2	213
3	208
4	204
5	198
6	192
7	186



COIL TAP ARRANGEMENT



NET WGT	INSPECTION & FINAL TEST
561 LB	
254.5 Kg	NOG
89312	N137!
UY74A	091021



LISTED 769G

ELECTROSTATIC GROUND SHIELD IN EACH PHASE

ENCLOSURE TYPE 2 (IP20). OR RAINPROOF TYPE 3R (IP22) WHEN PROVIDED SHIELD 9T18Y1074G06
SUITABLE FOR NONSINUSOIDAL CURRENT LOAD WITH K-FACTOR NOT TO EXCEED 13

BEFORE HANDLING, INSTALLING AND OPERATING, SEE INSTRUCTION 475A667AAP001
ALUMINUM CONDUCTOR PRIMARY: 10 KV BIL SECONDARY: 10 KV BIL
IN ACCORDANCE WITH NEC SECTION 450-9, ALLOW AT LEAST SIX INCHES CLEARANCE FOR VENTILATION.
CHECK ADDITIONAL NEC AND LOCAL CODE

ASSEMBLED IN MEXICO

X3 H3 X2 H2 X1 H1

Note: X0 at the bottom

Outline: 303B111GEUY74A

NEMA CLASS AA DRY TYPE TRANSFORMER

Meets DOE 2016 efficiency

X3 H3 X2 H2 X1 H1
- - - - -
X3 H3 X2 H2 X1 H1
- - - - -



2M000000



3M000000

X0