



Transformer

by ABB



1M000000

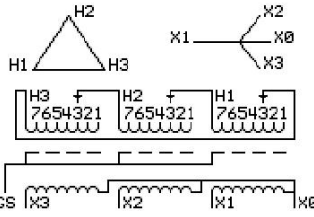
Catalog Number **Type QL**
9T11A1453G34

45.0 KVA 60 HZ 3 PH 4.9 % IMP
 40 C AMB. 115 C RISE 220 C SYSTEM IS-19C

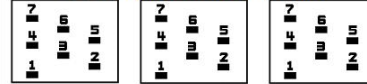
PRIMARY (H) 208 VOLTS (LINE-LINE)
 SECONDARY (X) 208 VOLTS (LINE-LINE)
 120 VOLTS (LINE-NEUTRAL)

JUMPER CONNECTION

| TAP | VOLTS |
|-----|-------|
| 1 | 219 |
| 2 | 213 |
| 3 | 208 |
| 4 | 204 |
| 5 | 198 |
| 6 | 192 |
| 7 | 186 |



COIL TAP ARRANGEMENT



NET WGT
 561 LB INSPECTION & FINAL TEST
 254.5 Kg TEST
 89912 NOG
 UY74A N137!
 091021



LISTED 769G

ELECTROSTATIC GROUND SHIELD IN EACH PHASE

ENCLOSURE TYPE 2 (IP20). OR RAINPROOF TYPE 3R (IP22) WHEN PROVIDED SHIELD 9T18Y1074G06

SUITABLE FOR NONSINUSOIDAL CURRENT LOAD WITH K-FACTOR NOT TO EXCEED 13

BEFORE HANDLING, INSTALLING AND OPERATING, SEE INSTRUCTION 475A667AAP001

ALUMINUM CONDUCTOR PRIMARY: 10 KV BIL SECONDARY: 10 KV BIL

IN ACCORDANCE WITH NEC SECTION 450-9, ALLOW AT LEAST SIX INCHES CLEARANCE FOR VENTILATION.

CHECK ADDITIONAL NEC AND LOCAL CODE

NEMA CLASS AA DRY TYPE TRANSFORMER

Meets DOE 2016 efficiency

ASSEMBLED IN MEXICO

X3 H3 X2 H2 X1 H1

Note: X0 at the bottom

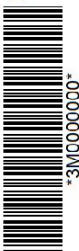
Outline: 303B111GEUYP74A

X3 H3 X2 H2 X1 H1



2M000000

X3 H3 X2 H2 X1 H1



3M000000

X0