



Transformer

—
by ABB



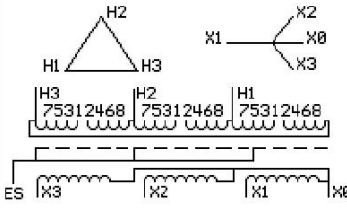
1M000000

Catalog Number **Type QL**
9T11A1455G03

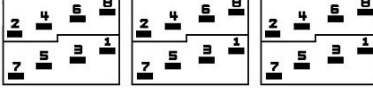
112.5 KVA 60 HZ 3 PH 3.9 % IMP
40 C AMB. 150 C RISE 220 C SYSTEM IS-19C

PRIMARY (H) 208 VOLTS (LINE-LINE)
SECONDARY (X) 208 VOLTS (LINE-LINE)
 120 VOLTS (LINE-NEUTRAL)

JUMPER CONNECTION	TAP VOLTS
1-2	219
2-3	214
3-4	208
4-5	204
5-6	198
6-7	193
7-8	188



COIL TAP ARRANGMENT



NET WGT	INSPECTION & FINAL TEST
1030 LB	TEST
467.2 Kg	NOG
89916	N137!
DY76A	091021



ELECTROSTATIC GROUND SHIELD IN EACH PHASE

ENCLOSURE TYPE 2 (IP20). OR RAINFOOF TYPE 3R (IP22) WHEN PROVIDED SHIELD 9T18Y1076G06
SUITABLE FOR NONSINUSOIDAL CURRENT LOAD WITH K-FACTOR NOT TO EXCEED 13

BEFORE HANDLING, INSTALLING AND OPERATING, SEE INSTRUCTION 475A667AAP001
ALUMINUM CONDUCTOR PRIMARY: 10 KV BIL SECONDARY: 10 KV BIL
IN ACCORDANCE WITH NEC SECTION 450-9, ALLOW AT LEAST SIX INCHES CLEARANCE FOR VENTILATION.
CHECK ADDITIONAL NEC AND LOCAL CODE

ASSEMBLED IN MEXICO

X3 - X2 - X1 - -
- H3 - H2 - H1

Note: X0 at the bottom

Outline: 303B111GEDYP76A

NEMA CLASS AA DRY TYPE TRANSFORMER

Meets DOE 2016 efficiency

X3 - X2 - X1 - - H3 - H2 - H1

X3 - X2 - X1 - - H3 - H2 - H1

X3 - X2 - X1 - - H3 - H2 - H1

X0

2M000000

3M000000