



Transformer

by ABB



1M000000

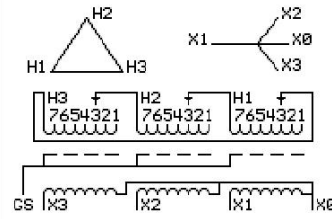
Catalog Number **Type QL**
9T11A1613G03

45.0 KVA **60 HZ** **3 PH** **3.3 % IMP**
40 C AMB. **150 C RISE** **220 C SYSTEM** **IS-19C**

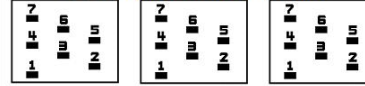
Note: Design is based on 75.00KVA & 150C Rise 5.5% Imp.

PRIMARY (H) **240 VOLTS (LINE-LINE)**
SECONDARY (X) **208 VOLTS (LINE-LINE)**
 120 VOLTS (LINE-NEUTRAL)

JUMPER CONNECTION TAP	VOLTS
1	251
2	247
3	240
4	233
5	229
6	222
7	215



COIL TAP ARRANGEMENT



NET WGT	INSPECTION & FINAL TEST
561 LB	
254.5 Kg	NOG
89354	N137!
UY74A	091021



LISTED 769G

ELECTROSTATIC GROUND SHIELD IN EACH PHASE

ENCLOSURE TYPE 2 (IP20). OR RAINPROOF TYPE 3R (IP22) WHEN PROVIDED SHIELD 9T18Y1074G06

SUITABLE FOR NONSINUSOIDAL CURRENT LOAD WITH K-FACTOR NOT TO EXCEED 13

BEFORE HANDLING, INSTALLING AND OPERATING, SEE INSTRUCTION 475A667AAP001

ALUMINUM CONDUCTOR PRIMARY: 10 KV BIL SECONDARY: 10 KV BIL

IN ACCORDANCE WITH NEC SECTION 450-9, ALLOW AT LEAST SIX INCHES CLEARANCE FOR VENTILATION.

CHECK ADDITIONAL NEC AND LOCAL CODE

NEMA CLASS AA DRY TYPE TRANSFORMER

Meets DOE 2016 efficiency

ASSEMBLED IN MEXICO

X3 H3 X2 H2 X1 H1

Note: X0 at the bottom

Outline: 303B111GEUYP74A

X3	H3	X2	H2	X1	H1
-	-	-	-	-	-
X3	H3	X2	H2	X1	H1
-	-	-	-	-	-



2M000000



3M000000

X0