



Transformer

—
by **ABB**



1M000000

Catalog Number
9T11A2182G03

Type QL

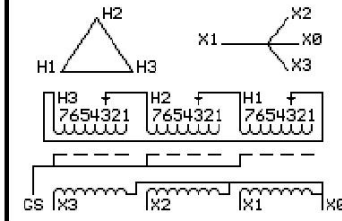
30.0 KVA 60 HZ 3 PH 2.2 % IMP
40 C AMB. 150 C RISE 220 C SYSTEM IS-19C

Note: Design is based on 45.00KVA & 115C Rise 3.1% Imp.

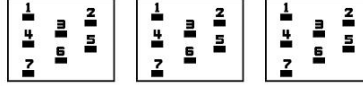
PRIMARY (H) 460 VOLTS (LINE-LINE)
SECONDARY (X) 208 VOLTS (LINE-LINE)
120 VOLTS (LINE-NEUTRAL)

JUMPER CONNECTION

TAP	VOLTS
1	484
2	470
3	460
4	447
5	437
6	427
7	414



COIL TAP ARRANGEMENT



NET WGT 444 LB
444 LB
201.4 Kg
88825
UX73A

INSPECTION & FINAL TEST
NOG
N137!
091021



LISTED 769G

ELECTROSTATIC GROUND SHIELD IN EACH PHASE

ENCLOSURE TYPE 2 (IP20). OR RAINPROOF TYPE 3R (IP22) WHEN PROVIDED SHIELD 9T18Y1072G06

SUITABLE FOR NONSINUSOIDAL CURRENT LOAD WITH K-FACTOR NOT TO EXCEED 13

BEFORE HANDLING, INSTALLING AND OPERATING, SEE INSTRUCTION 475A667AAP001

ALUMINUM CONDUCTOR PRIMARY: 10 KV BIL SECONDARY: 10 KV BIL

IN ACCORDANCE WITH NEC SECTION 450-9, ALLOW AT LEAST SIX INCHES CLEARANCE FOR VENTILATION.

CHECK ADDITIONAL NEC AND LOCAL CODE

ASSEMBLED IN MEXICO

X3 H3 X2 H2 X1 H1 X0

Note: standard

Outline: 303B111GEUXP73A

NEMA CLASS AA DRY TYPE TRANSFORMER

Meets DOE 2016 efficiency

X0	-	-	-	-	-	-
H1	-	-	-	-	-	-
X1	-	-	-	-	-	-
H2	-	-	-	-	-	-
X2	-	-	-	-	-	-
H3	-	-	-	-	-	-
X3	-	-	-	-	-	-



2M000000



3M000000