



Transformer



1M000000

Catalog Number
9T11C1001G64

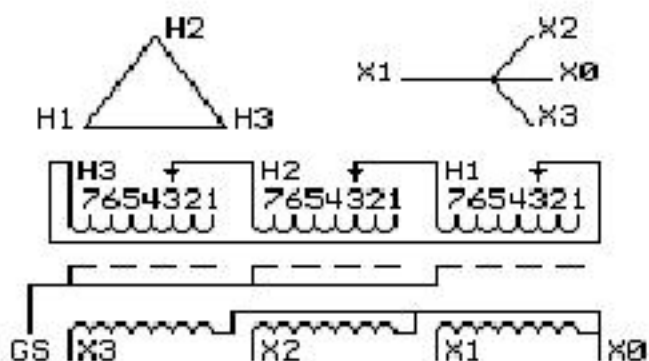
Type QL

15.0 KVA 60 HZ 3 PH 1.6 % IMP

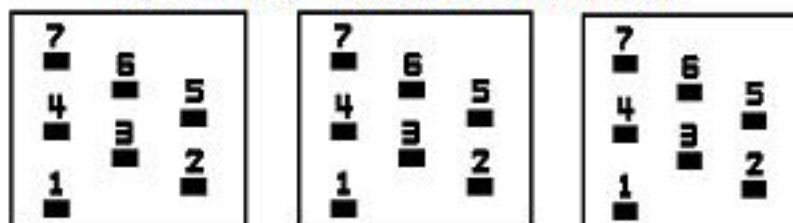
40 C AMB. 80 C RISE 220 C SYSTEM IS-19C

PRIMARY (H) 480 VOLTS (LINE-LINE)
SECONDARY (X) 208 VOLTS (LINE-LINE)
120 VOLTS (LINE-NEUTRAL)

ELECTROSTATIC GROUND SHIELD IN EACH PHASE



COIL TAP ARRANGEMENT



JUMPER CONNECTION	
TAP	VOLTS
1	503
2	493
3	480
4	468
5	455
6	443
7	433

NET WGT
353 LB
160.1 Kg

60770
UK72C

NOG
033016

INSPECTION
&
FINAL TEST
N614!



LISTED 769G

Assembled in Mexico

X3 H3 X2 H2 X1 H1 X0

Note: standard

ENCLOSURE TYPE 2 (IP20). OR RAINPROOF TYPE 3R (IP22) WHEN PROVIDED SHIELD 9T18Y1072G06

SUITABLE FOR NONSINUSOIDAL CURRENT LOAD WITH K-FACTOR NOT TO EXCEED 13

BEFORE HANDLING, INSTALLING AND OPERATING, SEE INSTRUCTION 475A667AAP001

COPPER CONDUCTOR

PRIMARY: 10 KV BIL

SECONDARY: 10 KV BIL

Outline:

303B111GEUXP72C

IN ACCORDANCE WITH NEC SECTION 450-9, ALLOW AT LEAST SIX INCHES

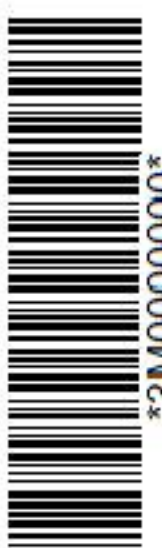
CLEARANCE FOR VENTILATION. CHECK ADDITIONAL NEC AND LOCAL CODE

X0
X1 H1
X2 H2
X3 H3



2M000000

X0
X1 H1
X2 H2
X3 H3



3M000000