



# Transformer

—  
by ABB



\*1M000000\*

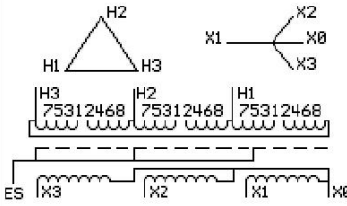
**Catalog Number**      **Type QL**  
**9T11C1004G64**

**75.0 KVA**    **60 HZ**    **3 PH**    **3.4 % IMP**  
**40 C AMB.**    **80 C RISE**    **220 C SYSTEM**    **IS-19C**

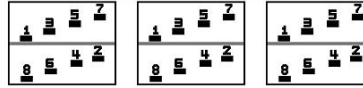
*Note: Design is based on 112.5KVA & 150C Rise 5.2% Imp.*

**PRIMARY (H)**      **480 VOLTS (LINE-LINE)**  
**SECONDARY (X)**    **208 VOLTS (LINE-LINE)**  
                          **120 VOLTS (LINE-NEUTRAL)**

JUMPER CONNECTION	
TAP	VOLTS
1-2	503
2-3	492
3-4	480
4-5	469
5-6	457
6-7	446
7-8	435



**COIL TAP ARRANGEMENT**



ELECTROSTATIC GROUND SHIELD IN EACH PHASE

ENCLOSURE TYPE 2 (IP20). OR RAINPROOF TYPE 3R (IP22) WHEN PROVIDED SHIELD 9T18Y1074G06  
SUITABLE FOR NONSINUSOIDAL CURRENT LOAD WITH K-FACTOR NOT TO EXCEED 13

**BEFORE HANDLING, INSTALLING AND OPERATING, SEE INSTRUCTION 475A667AAP001**  
COPPER CONDUCTOR      PRIMARY: 10 KV BIL      SECONDARY: 10 KV BIL  
IN ACCORDANCE WITH NEC SECTION 450-9, ALLOW AT LEAST SIX INCHES CLEARANCE FOR VENTILATION.  
CHECK ADDITIONAL NEC AND LOCAL CODE

NEMA CLASS AA DRY TYPE TRANSFORMER

Meets DOE 2016 efficiency

**ASSEMBLED IN MEXICO**

**X3 - X2 - X1 - -**  
**- H3 - H2 - H1**

Note: X0 at the bottom

Outline: 303B11GEDYP75C

**NET WGT**  
790 LB  
358.3 Kg  
89503  
DY75C

**INSPECTION & FINAL TEST**  
NOG  
N137!  
091021



X3 - X2 - X1 - - H3 - H2 - H1

X3 - X2 - X1 - - H3 - H2 - H1

X3 - X2 - X1 - - H3 - H2 - H1

X0

\*2M000000\*

\*3M000000\*