



# Transformer

by ABB



\*1M000000\*

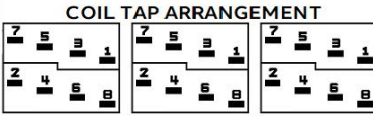
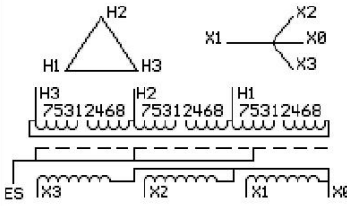
**Catalog Number**      **Type QL**  
**9T11C1005G64**

**112.5 KVA    60 HZ    3 PH    4.4 % IMP**  
**40 C AMB.    80 C RISE    220 C SYSTEM    IS-19C**

*Note: Design is based on 150.0KVA & 115C Rise 5.3% Imp.*

**PRIMARY (H)    480 VOLTS (LINE-LINE)**  
**SECONDARY (X)    208 VOLTS (LINE-LINE)**  
**120 VOLTS (LINE-NEUTRAL)**

JUMPER CONNECTION	TAP VOLTS
1-2	506
2-3	493
3-4	480
4-5	468
5-6	455
6-7	442
7-8	430



<b>NET WGT</b>	<b>INSPECTION &amp; FINAL TEST</b>
1240 LB	
562.5 Kg	<b>NOG</b>
89515	<b>N137!</b>
<b>DX76C</b>	<b>091021</b>



ELECTROSTATIC GROUND SHIELD IN EACH PHASE

ENCLOSURE TYPE 2 (IP20). OR RAINPROOF TYPE 3R (IP22) WHEN PROVIDED SHIELD 9T18Y1076G06

SUITABLE FOR NONSINUSOIDAL CURRENT LOAD WITH K-FACTOR NOT TO EXCEED 13

BEFORE HANDLING, INSTALLING AND OPERATING, SEE INSTRUCTION 475A667AAP001

COPPER CONDUCTOR      PRIMARY: 10 KV BIL      SECONDARY: 10 KV BIL

IN ACCORDANCE WITH NEC SECTION 450-9, ALLOW AT LEAST SIX INCHES CLEARANCE FOR VENTILATION.

CHECK ADDITIONAL NEC AND LOCAL CODE

NEMA CLASS AA DRY TYPE TRANSFORMER

Meets DOE 2016 efficiency

ASSEMBLED IN MEXICO

**X3 - X2 - X1 - -**  
**- H3 - H2 - H1**

Note: X0 at the bottom

Outline: 303B111GEDXP76C

**X3 - X2 - X1 - -**  
**- H3 - H2 - H1**

**X3 - X2 - X1 - -**  
**- H3 - H2 - H1**

**X0**

**X3 - X2 - X1 - -**  
**- H3 - H2 - H1**

**X3 - X2 - X1 - -**  
**- H3 - H2 - H1**

**X0**

\*2M000000\*

\*3M000000\*