



# Transformer

by ABB



\*1M0000000\*

**Catalog Number**      **Type QL**  
**9T11C1008G34**

**300.0 KVA    60 HZ      3 PH    3 % IMP**  
**40 C AMB.    115 C RISE    220 C SYSTEM    IS-19C**

*Note: Design is based on 500.0KVA & 115C Rise    5% Imp.*

**PRIMARY (H)      480 VOLTS (LINE-LINE)**  
**SECONDARY (X)    208 VOLTS (LINE-LINE)**  
**120 VOLTS (LINE-NEUTRAL)**

### JUMPER CONNECTION

**TAP    VOLTS**

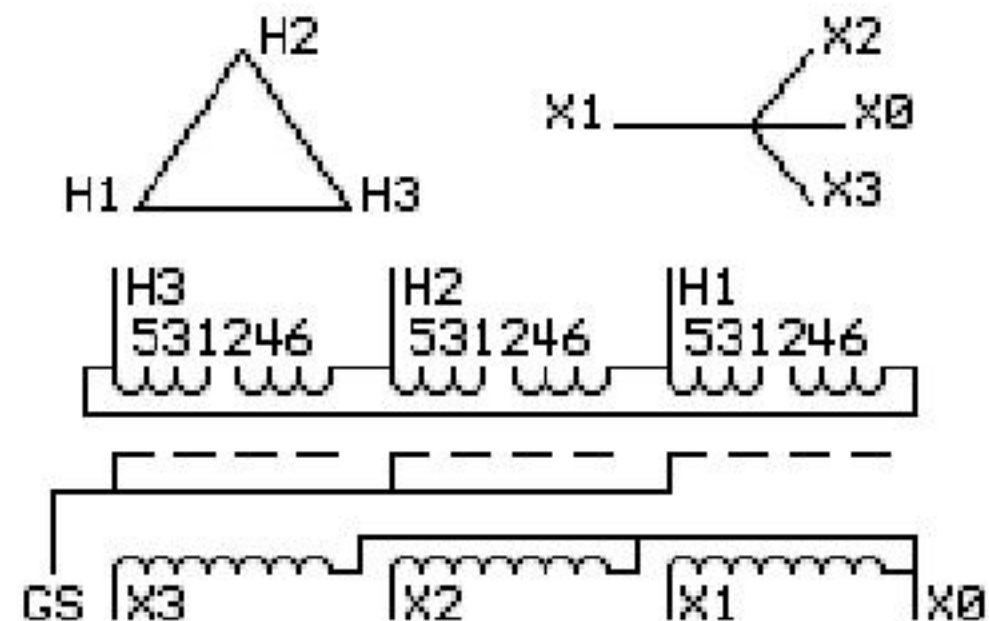
1-2    500

2-3    490

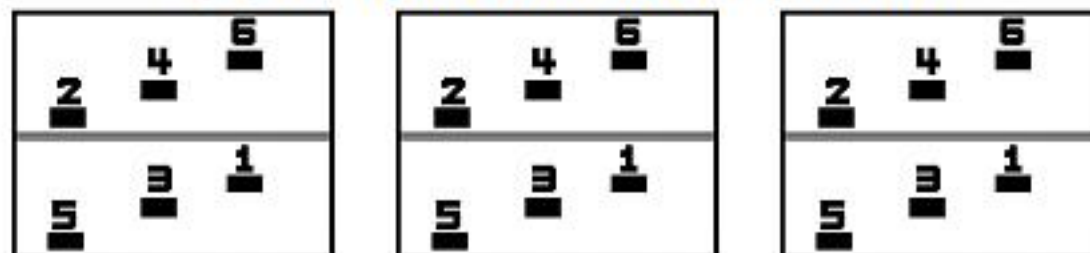
3-4    480

4-5    470

5-6    460



### COIL TAP ARRANGEMENT



**NET WGT**      **INSPECTION & FINAL TEST**  
3720 LB  
1687.4 Kg  
89544  
DX79C  
**NOG**  
N137!  
091021



ELECTROSTATIC GROUND SHIELD IN EACH PHASE

ENCLOSURE TYPE 2 (IP20). OR RAINPROOF TYPE 3R (IP22) WHEN PROVIDED SHIELD 9T18Y1079G06

SUITABLE FOR NONSINUSOIDAL CURRENT LOAD WITH K-FACTOR NOT TO EXCEED 13

BEFORE HANDLING, INSTALLING AND OPERATING, SEE INSTRUCTION 475A667AAP009

COPPER CONDUCTOR      PRIMARY: 10 KV BIL      SECONDARY: 10 KV BIL

IN ACCORDANCE WITH NEC SECTION 450-9, ALLOW AT LEAST SIX INCHES CLEARANCE FOR VENTILATION.

CHECK ADDITIONAL NEC AND LOCAL CODE

ASSEMBLED IN MEXICO

Note:

Outline: 303B112GEDXP79C

NEMA CLASS AA DRY TYPE TRANSFORMER

Meets DOE 2016 efficiency