



Transformer

by ABB



1M000000

Catalog Number 9T11C1008G34 **Type** QL

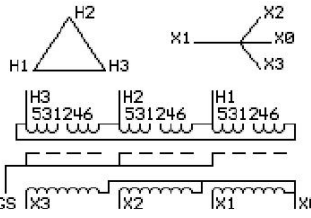
300.0 KVA 60 HZ 3 PH 3 % IMP
40 C AMB. 115 C RISE 220 C SYSTEM IS-19C

Note: Design is based on 500.0KVA & 115C Rise 5% Imp.

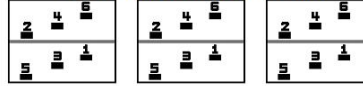
PRIMARY (H) 480 VOLTS (LINE-LINE)
SECONDARY (X) 208 VOLTS (LINE-LINE)
120 VOLTS (LINE-NEUTRAL)

JUMPER CONNECTION

TAP	VOLTS
1-2	500
2-3	490
3-4	480
4-5	470
5-6	460



COIL TAP ARRANGEMENT



NET WGT 3720 LB
1687.4 Kg
89544
DX79C

INSPECTION & FINAL TEST
NOG
N137!
091021



ELECTROSTATIC GROUND SHIELD IN EACH PHASE

ENCLOSURE TYPE 2 (IP20). OR RAINFOOF TYPE 3R (IP22) WHEN PROVIDED SHIELD 9T18Y1079G06
SUITABLE FOR NONSINUSOIDAL CURRENT LOAD WITH K-FACTOR NOT TO EXCEED 13

BEFORE HANDLING, INSTALLING AND OPERATING, SEE INSTRUCTION 475A667AAP009
COPPER CONDUCTOR PRIMARY: 10 KV BIL SECONDARY: 10 KV BIL
IN ACCORDANCE WITH NEC SECTION 450-9, ALLOW AT LEAST SIX INCHES CLEARANCE FOR VENTILATION.
CHECK ADDITIONAL NEC AND LOCAL CODE

ASSEMBLED IN MEXICO

Note:

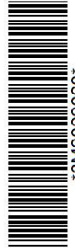
Outline: 303B112GEDXP79C

NEMA CLASS AA DRY TYPE TRANSFORMER

Meets DOE 2016 efficiency



2M000000



3M000000