



Transformer

by ABB



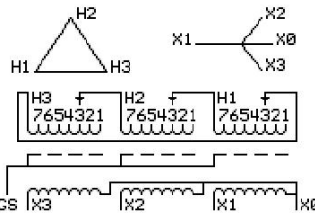
1M000000

Catalog Number 9T11C1022G03 **Type** QL

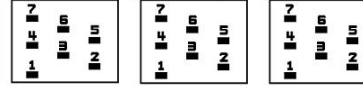
30.0 KVA 60 HZ 3 PH 4.1 % IMP
40 C AMB. 150 C RISE 220 C SYSTEM IS-19C

PRIMARY (H) 480 VOLTS (LINE-LINE)
SECONDARY (X) 220 VOLTS (LINE-LINE)
127 VOLTS (LINE-NEUTRAL)

JUMPER CONNECTION	TAP VOLTS
1	503
2	493
3	480
4	467
5	457
6	445
7	432



COIL TAP ARRANGEMENT



NET WGT 353 LB
INSPECTION & FINAL TEST
 160.1 Kg
NOG 89956
 UX72C
N139! 092021



ELECTROSTATIC GROUND SHIELD IN EACH PHASE

ENCLOSURE TYPE 2 (IP20). OR RAINPROOF TYPE 3R (IP22) WHEN PROVIDED SHIELD 9T18Y1072G06
 SUITABLE FOR NONSINUSOIDAL CURRENT LOAD WITH K-FACTOR NOT TO EXCEED 13

BEFORE HANDLING, INSTALLING AND OPERATING, SEE INSTRUCTION 475A667AAP001
 COPPER CONDUCTOR PRIMARY: 10 KV BIL SECONDARY: 10 KV BIL
 IN ACCORDANCE WITH NEC SECTION 450-9, ALLOW AT LEAST SIX INCHES CLEARANCE FOR VENTILATION.
 CHECK ADDITIONAL NEC AND LOCAL CODE

ASSEMBLED IN MEXICO

X3 H3 X2 H2 X1 H1 X0

Note: standard

Outline: 303B111GEUXP72C

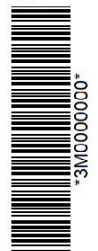
NEMA CLASS AA DRY TYPE TRANSFORMER

Meets DOE 2016 efficiency

X0
 H1
 H2
 H3
 X1
 X2
 X3



2M000000



3M000000