



Transformer

—
by ABB



1M000000

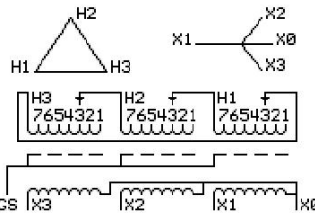
Catalog Number **Type QL**
9T11C1023G03

45.0 KVA 60 HZ 3 PH 3.2 % IMP
40 C AMB. 150 C RISE 220 C SYSTEM IS-19C

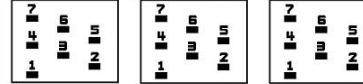
Note: Design is based on 45.00KVA & 150C Rise 3.2% Imp.

PRIMARY (H) 480 VOLTS (LINE-LINE)
SECONDARY (X) 220 VOLTS (LINE-LINE)
 127 VOLTS (LINE-NEUTRAL)

JUMPER CONNECTION	TAP VOLTS
1	504
2	494
3	480
4	468
5	457
6	443
7	432



COIL TAP ARRANGEMENT



NET WGT	INSPECTION & FINAL TEST
480 LB	
217.7 Kg	NOG
88856	N137!
UX73C	091021



ELECTROSTATIC GROUND SHIELD IN EACH PHASE

ENCLOSURE TYPE 2 (IP20). OR RAINPROOF TYPE 3R (IP22) WHEN PROVIDED SHIELD 9T18Y1072G06
SUITABLE FOR NONSINUSOIDAL CURRENT LOAD WITH K-FACTOR NOT TO EXCEED 13

BEFORE HANDLING, INSTALLING AND OPERATING, SEE INSTRUCTION 475A667AAP001
COPPER CONDUCTOR PRIMARY: 10 KV BIL SECONDARY: 10 KV BIL
IN ACCORDANCE WITH NEC SECTION 450-9, ALLOW AT LEAST SIX INCHES CLEARANCE FOR VENTILATION.
CHECK ADDITIONAL NEC AND LOCAL CODE

NEMA CLASS AA DRY TYPE TRANSFORMER

Meets DOE 2016 efficiency

ASSEMBLED IN MEXICO

X3 H3 X2 H2 X1 H1 -

Note: X0 at the top

Outline: 303B111GEUXP73C

X3	H3	X2	H2	X1	H1	-
X3	H3	X2	H2	X1	H1	-
X3	H3	X2	H2	X1	H1	-



2M000000



3M000000

X0