



# Transformer

by ABB



\*1M000000\*

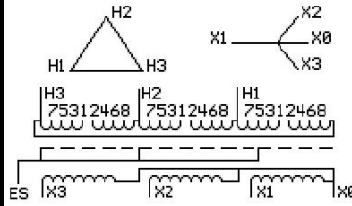
**Catalog Number**      **Type QL**  
**9T11C1025G03**

**112.5 KVA**    **60 HZ**    **3 PH**    **3.3 % IMP**  
**40 C AMB.**    **150 C RISE**    **220 C SYSTEM**    **IS-19C**

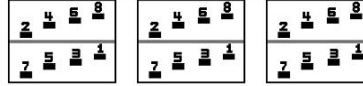
**PRIMARY (H)**      **480 VOLTS (LINE-LINE)**  
**SECONDARY (X)**    **220 VOLTS (LINE-LINE)**  
   **127 VOLTS (LINE-NEUTRAL)**

**JUMPER CONNECTION**

TAP	VOLTS
1-2	502
2-3	490
3-4	480
4-5	466
5-6	454
6-7	442
7-8	429



### COIL TAP ARRANGEMENT



**NET WGT**  
1085 LB  
492.2 Kg  
**INSPECTION & FINAL TEST**  
NOG  
N139!  
DY76C  
092021



ELECTROSTATIC GROUND SHIELD IN EACH PHASE

ENCLOSURE TYPE 2 (IP20). OR RAINPROOF TYPE 3R (IP22) WHEN PROVIDED SHIELD 9T18Y1076G06

SUITABLE FOR NONSINUSOIDAL CURRENT LOAD WITH K-FACTOR NOT TO EXCEED 13

BEFORE HANDLING, INSTALLING AND OPERATING, SEE INSTRUCTION 475A667AAP001

COPPER CONDUCTOR      PRIMARY: 10 KV BIL      SECONDARY: 10 KV BIL

IN ACCORDANCE WITH NEC SECTION 450-9, ALLOW AT LEAST SIX INCHES CLEARANCE FOR VENTILATION.

CHECK ADDITIONAL NEC AND LOCAL CODE

### ASSEMBLED IN MEXICO

**X3 - X2 - X1 - -**  
**- H3 - H2 - H1**

Note: X0 at the bottom

Outline: 303B111GEDYP76C

NEMA CLASS AA DRY TYPE TRANSFORMER

Meets DOE 2016 efficiency

X3 - X2 - X1 - - H1  
- H3 - H2 - H1  
X3 - X2 - X1 - - X0  
- H3 - H2 - H1 - H1

2M000000\*

3M000000\*