

Transformer

by **ABB**



1M000000

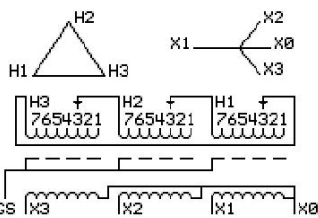
Catalog Number **Type QL**
9T11C1083G63

45.0 KVA **60 HZ** **3 PH** **2.4 % IMP**
40 C AMB. **80 C RISE** **220 C SYSTEM** **IS-19C**

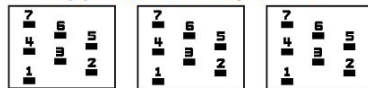
Note: Design is based on 75.00KVA & 150C Rise 4.2% Imp.

PRIMARY (H) **480 VOLTS (LINE-LINE)**
SECONDARY (X) **400 VOLTS (LINE-LINE)**
 231 VOLTS (LINE-NEUTRAL)

JUMPER CONNECTION	TAP VOLTS
1	502
2	493
3	480
4	466
5	457
6	444
7	431



COIL TAP ARRANGEMENT



NET WGT **INSPECTION & FINAL TEST**
661 LB **299.8 Kg**
89588 **NOG**
UY74C **N139!**
 092021



ELECTROSTATIC GROUND SHIELD IN EACH PHASE

ENCLOSURE TYPE 2 (IP20). OR RAINPROOF TYPE 3R (IP22) WHEN PROVIDED SHIELD 9T18Y1074G06

SUITABLE FOR NONSINUSOIDAL CURRENT LOAD WITH K-FACTOR NOT TO EXCEED 13

BEFORE HANDLING, INSTALLING AND OPERATING, SEE INSTRUCTION 475A667AAP001

COPPER CONDUCTOR PRIMARY: 10 KV BIL SECONDARY: 10 KV BIL

IN ACCORDANCE WITH NEC SECTION 450-9, ALLOW AT LEAST SIX INCHES CLEARANCE FOR VENTILATION.

CHECK ADDITIONAL NEC AND LOCAL CODE

ASSEMBLED IN MEXICO

X3 H3 X2 H2 X1 H1

Note: X0 at the bottom

Outline: 303B111GEUY74C

NEMA CLASS AA DRY TYPE TRANSFORMER

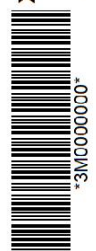
Meets DOE 2016 efficiency

X3 H3 X2 H2 X1 H1



2M000000

X3 H3 X2 H2 X1 H1



3M000000

X0