



Transformer

by ABB



1M000000

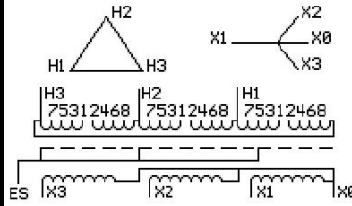
Catalog Number **Type QL**
9T11C1085G03

112.5 KVA 60 HZ 3 PH 3.3 % IMP
40 C AMB. 150 C RISE 220 C SYSTEM IS-19C

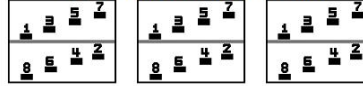
PRIMARY (H) 480 VOLTS (LINE-LINE)
SECONDARY (X) 400 VOLTS (LINE-LINE)
231 VOLTS (LINE-NEUTRAL)

JUMPER CONNECTION

TAP	VOLTS
1-2	505
2-3	493
3-4	480
4-5	468
5-6	456
6-7	443
7-8	431



COIL TAP ARRANGEMENT



NET WGT
1085 LB
492.2 Kg
89965
DY76C

INSPECTION & FINAL TEST
NOG
N139!
092021



ELECTROSTATIC GROUND SHIELD IN EACH PHASE

ENCLOSURE TYPE 2 (IP20). OR RAINPROOF TYPE 3R (IP22) WHEN PROVIDED SHIELD 9T18Y1076G06

SUITABLE FOR NONSINUSOIDAL CURRENT LOAD WITH K-FACTOR NOT TO EXCEED 13

BEFORE HANDLING, INSTALLING AND OPERATING, SEE INSTRUCTION 475A667AAP001

COPPER CONDUCTOR PRIMARY: 10 KV BIL SECONDARY: 10 KV BIL

IN ACCORDANCE WITH NEC SECTION 450-9, ALLOW AT LEAST SIX INCHES CLEARANCE FOR VENTILATION.

CHECK ADDITIONAL NEC AND LOCAL CODE

NEMA CLASS AA DRY TYPE TRANSFORMER

Meets DOE 2016 efficiency

ASSEMBLED IN MEXICO

X3 - X2 - X1 - -
- H3 - H2 - H1

Note: X0 at the bottom

Outline: 303B11GEDYP76C

X3 - X2 - X1 - -
- H3 - H2 - H1

X3 - X2 - X1 - -
- H3 - H2 - H1

X0

X3 - X2 - X1 - -
- H3 - H2 - H1

X3 - X2 - X1 - -
- H3 - H2 - H1

X0

2M000000

3M000000