



# Transformer

—  
by ABB



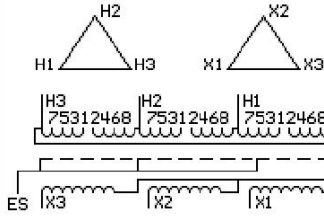
\*1M000000\*

**Catalog Number**      **Type QL**  
**9T11C1106G64**

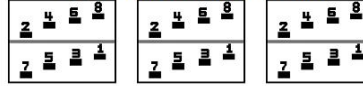
150.0 KVA    60 HZ    3 PH    2.6 % IMP  
40 C AMB.    80 C RISE    220 C SYSTEM    IS-19C

PRIMARY (H)      480 VOLTS (LINE-LINE)  
SECONDARY (X)    480 VOLTS (LINE-LINE)

JUMPER CONNECTION	
TAP	VOLTS
1-2	506
2-3	489
3-4	480
4-5	471
5-6	454
6-7	445
7-8	436



### COIL TAP ARRANGMENT



<b>NET WGT</b>	INSPECTION & FINAL TEST
1847 LB	NOG
837.8 Kg	N137!
89968	091021
DX77C	



ELECTROSTATIC GROUND SHIELD IN EACH PHASE

ENCLOSURE TYPE 2 (IP20). OR RAINPROOF TYPE 3R (IP22) WHEN PROVIDED SHIELD 9T18Y1077G06

SUITABLE FOR NONSINUSOIDAL CURRENT LOAD WITH K-FACTOR NOT TO EXCEED 13

BEFORE HANDLING, INSTALLING AND OPERATING, SEE INSTRUCTION 475A667AAP009

COPPER CONDUCTOR      PRIMARY: 10 KV BIL      SECONDARY: 10 KV BIL

IN ACCORDANCE WITH NEC SECTION 450-9, ALLOW AT LEAST SIX INCHES CLEARANCE FOR VENTILATION.

CHECK ADDITIONAL NEC AND LOCAL CODE

ASSEMBLED IN MEXICO

Note:

Outline: 303B112GEDXP77C

NEMA CLASS AA DRY TYPE TRANSFORMER

Meets DOE 2016 efficiency



\*2M000000\*



\*3M000000\*