



Transformer

by ABB



1M000000

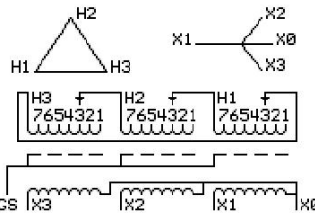
Catalog Number 9T11C1172G33 **Type** QL

30.0 KVA 60 HZ 3 PH 2.2 % IMP
40 C AMB. 115 C RISE 220 C SYSTEM IS-19C

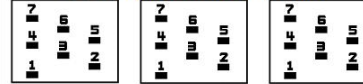
Note: Design is based on 45.00KVA & 115C Rise 3.3% Imp.

PRIMARY (H) 480 VOLTS (LINE-LINE)
SECONDARY (X) 480 VOLTS (LINE-LINE)
277 VOLTS (LINE-NEUTRAL)

JUMPER CONNECTION TAP	VOLTS
1	505
2	490
3	480
4	469
5	455
6	444
7	433



COIL TAP ARRANGEMENT



NET WGT
480 LB
217.7 Kg
88873
UX73C

INSPECTION & FINAL TEST
NOG
N137!
091021



LISTED 769G

ELECTROSTATIC GROUND SHIELD IN EACH PHASE

ENCLOSURE TYPE 2 (IP20). OR RAINPROOF TYPE 3R (IP22) WHEN PROVIDED SHIELD 9T18Y1072G06

SUITABLE FOR NONSINUSOIDAL CURRENT LOAD WITH K-FACTOR NOT TO EXCEED 13

BEFORE HANDLING, INSTALLING AND OPERATING, SEE INSTRUCTION 475A667AAP001

COPPER CONDUCTOR PRIMARY: 10 KV BIL SECONDARY: 10 KV BIL

IN ACCORDANCE WITH NEC SECTION 450-9, ALLOW AT LEAST SIX INCHES CLEARANCE FOR VENTILATION.

CHECK ADDITIONAL NEC AND LOCAL CODE

NEMA CLASS AA DRY TYPE TRANSFORMER

Meets DOE 2016 efficiency

ASSEMBLED IN MEXICO

X3 H3 X2 H2 X1 H1 -

Note: X0 at the top

Outline: 303B111GEUXP73C

X3 H3 X2 H2 X1 H1 -
X3 H3 X2 H2 X1 H1 -
X3 H3 X2 H2 X1 H1 -



2M000000



3M000000

X0