



Transformer

by ABB



1M000000

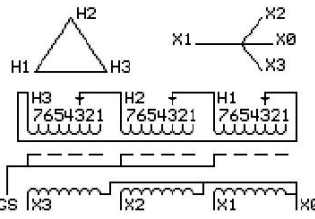
Catalog Number **Type QL**
9T11C1451G03

15.0 KVA 60 HZ 3 PH 3.8 % IMP
40 C AMB. 150 C RISE 220 C SYSTEM IS-19C

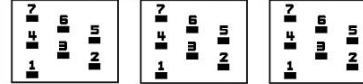
Note: Design is based on 15.00KVA & 150C Rise 3.8% Imp.

PRIMARY (H) 208 VOLTS (LINE-LINE)
SECONDARY (X) 208 VOLTS (LINE-LINE)
120 VOLTS (LINE-NEUTRAL)

JUMPER CONNECTION	TAP VOLTS
1	218
2	214
3	208
4	202
5	198
6	192
7	188



COIL TAP ARRANGEMENT



NET WGT	INSPECTION & FINAL TEST
230 LB	
104.3 Kg	NOG
89748	N139!
UX71C	092021



LISTED 769G

ELECTROSTATIC GROUND SHIELD IN EACH PHASE

ENCLOSURE TYPE 2 (IP20). OR RAINPROOF TYPE 3R (IP22) WHEN PROVIDED SHIELD 9T18Y1071G06
SUITABLE FOR NONSINUSOIDAL CURRENT LOAD WITH K-FACTOR NOT TO EXCEED 13

BEFORE HANDLING, INSTALLING AND OPERATING, SEE INSTRUCTION 475A667AAP001
COPPER CONDUCTOR PRIMARY: 10 KV BIL SECONDARY: 10 KV BIL
IN ACCORDANCE WITH NEC SECTION 450-9, ALLOW AT LEAST SIX INCHES CLEARANCE FOR VENTILATION.
CHECK ADDITIONAL NEC AND LOCAL CODE

ASSEMBLED IN MEXICO

X3 H3 X2 H2 X1 H1 X0

Note: standard

Outline: 303B111GEUXP71C

NEMA CLASS AA DRY TYPE TRANSFORMER

Meets DOE 2016 efficiency

X0	-	-	-	-	-	-	-	-	-
X1	-	-	-	-	-	-	-	-	-
H1	-	-	-	-	-	-	-	-	-
X2	-	-	-	-	-	-	-	-	-
H2	-	-	-	-	-	-	-	-	-
X3	-	-	-	-	-	-	-	-	-
H3	-	-	-	-	-	-	-	-	-
X0	-	-	-	-	-	-	-	-	-



2M000000



3M000000