



# Transformer

by ABB



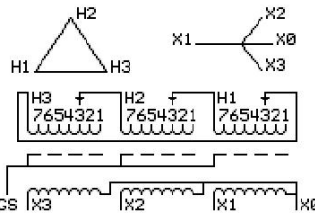
\*1M000000\*

**Catalog Number** 9T11C1452G63 **Type** QL

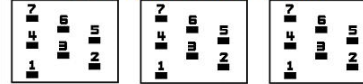
30.0 KVA 60 HZ 3 PH 1.9 % IMP  
40 C AMB. 80 C RISE 220 C SYSTEM IS-19C

PRIMARY (H) 208 VOLTS (LINE-LINE)  
SECONDARY (X) 208 VOLTS (LINE-LINE)  
120 VOLTS (LINE-NEUTRAL)

JUMPER CONNECTION TAP	VOLTS
1	218
2	215
3	208
4	204
5	197
6	193
7	186



### COIL TAP ARRANGEMENT



**NET WGT**  
480 LB  
217.7 Kg  
88935  
UX73C

**INSPECTION & FINAL TEST**  
NOG  
N137!  
091021



ELECTROSTATIC GROUND SHIELD IN EACH PHASE

ENCLOSURE TYPE 2 (IP20). OR RAINPROOF TYPE 3R (IP22) WHEN PROVIDED SHIELD 9T18Y1072G06  
SUITABLE FOR NONSINUSOIDAL CURRENT LOAD WITH K-FACTOR NOT TO EXCEED 13

BEFORE HANDLING, INSTALLING AND OPERATING, SEE INSTRUCTION 475A667AAP001  
COPPER CONDUCTOR PRIMARY: 10 KV BIL SECONDARY: 10 KV BIL  
IN ACCORDANCE WITH NEC SECTION 450-9, ALLOW AT LEAST SIX INCHES CLEARANCE FOR VENTILATION.  
CHECK ADDITIONAL NEC AND LOCAL CODE

ASSEMBLED IN MEXICO

X3 H3 X2 H2 X1 H1 -

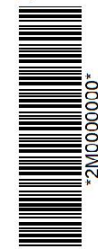
Note: X0 at the top

Outline: 303B111GEUXP73C

NEMA CLASS AA DRY TYPE TRANSFORMER

Meets DOE 2016 efficiency

X3 H3 X2 H2 X1 H1 -  
X3 H3 X2 H2 X1 H1 -  
X3 H3 X2 H2 X1 H1 -



\*2M000000\*



\*3M000000\*

X0