



# Transformer

by ABB



\*1M000000\*

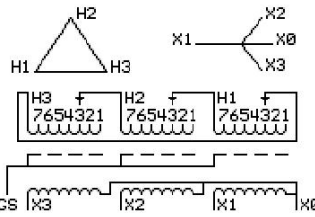
**Catalog Number** 9T11C1453G33 **Type** QL

45.0 KVA 60 HZ 3 PH 4.3 % IMP  
40 C AMB. 115 C RISE 220 C SYSTEM IS-19C

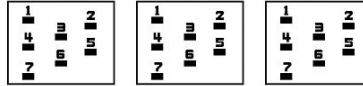
Note: Design is based on 45.00KVA & 115C Rise 4.3% Imp.

PRIMARY (H) 208 VOLTS (LINE-LINE)  
SECONDARY (X) 208 VOLTS (LINE-LINE)  
120 VOLTS (LINE-NEUTRAL)

JUMPER CONNECTION	TAP VOLTS
1	218
2	215
3	208
4	204
5	197
6	193
7	186



### COIL TAP ARRANGEMENT



**NET WGT**  
661 LB  
299.8 Kg  
89752  
UY74C

**INSPECTION & FINAL TEST**  
NOG  
N139!  
092021



LISTED 769G

ELECTROSTATIC GROUND SHIELD IN EACH PHASE

ENCLOSURE TYPE 2 (IP20). OR RAINPROOF TYPE 3R (IP22) WHEN PROVIDED SHIELD 9T18Y1074G06

SUITABLE FOR NONSINUSOIDAL CURRENT LOAD WITH K-FACTOR NOT TO EXCEED 13

BEFORE HANDLING, INSTALLING AND OPERATING, SEE INSTRUCTION 475A667AAP001

COPPER CONDUCTOR PRIMARY: 10 KV BIL SECONDARY: 10 KV BIL

IN ACCORDANCE WITH NEC SECTION 450-9, ALLOW AT LEAST SIX INCHES CLEARANCE FOR VENTILATION.

CHECK ADDITIONAL NEC AND LOCAL CODE

NEMA CLASS AA DRY TYPE TRANSFORMER

Meets DOE 2016 efficiency

### ASSEMBLED IN MEXICO

X3 H3 X2 H2 X1 H1

Note: X0 at the bottom

Outline: 303B111GEUY74C

X3 H3 X2 H2 X1 H1  
X3 H3 X2 H2 X1 H1  
X3 H3 X2 H2 X1 H1



\*2M000000\*



\*3M000000\*

X0