



Transformer

by ABB



1M000000

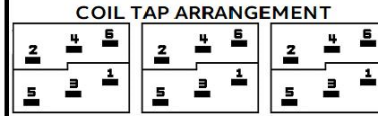
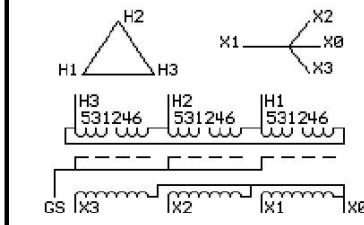
Catalog Number **Type QL**
9T11C1454G34

75.0 KVA 60 HZ 3 PH 4.4 % IMP
40 C AMB. 115 C RISE 220 C SYSTEM IS-19C

Note: Design is based on 112.5KVA & 150C Rise 6.6% Imp.

PRIMARY (H) 208 VOLTS (LINE-LINE)
SECONDARY (X) 208 VOLTS (LINE-LINE)
120 VOLTS (LINE-NEUTRAL)

JUMPER CONNECTION	
TAP	VOLTS
1-2	218
2-3	213
3-4	208
4-5	202
5-6	197



NET WGT
790 LB
358.3 Kg
INSPECTION & FINAL TEST
NOG
89759
DY75C
N137!
091021



ELECTROSTATIC GROUND SHIELD IN EACH PHASE

ENCLOSURE TYPE 2 (IP20). OR RAINPROOF TYPE 3R (IP22) WHEN PROVIDED SHIELD 9T18Y1074G06
SUITABLE FOR NONSINUSOIDAL CURRENT LOAD WITH K-FACTOR NOT TO EXCEED 13

BEFORE HANDLING, INSTALLING AND OPERATING, SEE INSTRUCTION 475A667AAP001
COPPER CONDUCTOR PRIMARY: 10 KV BIL SECONDARY: 10 KV BIL
IN ACCORDANCE WITH NEC SECTION 450-9, ALLOW AT LEAST SIX INCHES CLEARANCE FOR VENTILATION.
CHECK ADDITIONAL NEC AND LOCAL CODE

ASSEMBLED IN MEXICO

X3 - X2 - X1 - -
- H3 - H2 - H1

Note: X0 at the bottom

Outline: 303B111GEDYP75C

NEMA CLASS AA DRY TYPE TRANSFORMER

Meets DOE 2016 efficiency

Vertical barcode area with labels:

- X3 - X2 - X1 - -
- H3 - H2 - H1
- X3 - X2 - X1 - -
- H3 - H2 - H1
- X0

Bottom labels:

- *2M000000*
- *3M000000*