



Transformer

by ABB



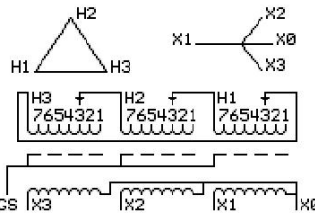
1M000000

Catalog Number **Type QL**
9T11C1793G63

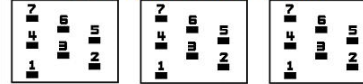
45.0 KVA 60 HZ 3 PH 3 % IMP
40 C AMB. 80 C RISE 220 C SYSTEM IS-19C

PRIMARY (H) 380 VOLTS (LINE-LINE)
SECONDARY (X) 208 VOLTS (LINE-LINE)
120 VOLTS (LINE-NEUTRAL)

JUMPER CONNECTION	TAP VOLTS
1	399
2	390
3	380
4	369
5	360
6	352
7	343



COIL TAP ARRANGEMENT



NET WGT
661 LB
299.8 Kg
89989
UY74C

INSPECTION & FINAL TEST
NOG
N139!
092021



LISTED 769G

ELECTROSTATIC GROUND SHIELD IN EACH PHASE

ENCLOSURE TYPE 2 (IP20). OR RAINPROOF TYPE 3R (IP22) WHEN PROVIDED SHIELD 9T18Y1074G06

SUITABLE FOR NONSINUSOIDAL CURRENT LOAD WITH K-FACTOR NOT TO EXCEED 13

BEFORE HANDLING, INSTALLING AND OPERATING, SEE INSTRUCTION 475A667AAP001

COPPER CONDUCTOR PRIMARY: 10 KV BIL SECONDARY: 10 KV BIL

IN ACCORDANCE WITH NEC SECTION 450-9, ALLOW AT LEAST SIX INCHES CLEARANCE FOR VENTILATION.

CHECK ADDITIONAL NEC AND LOCAL CODE

ASSEMBLED IN MEXICO

X3 H3 X2 H2 X1 H1

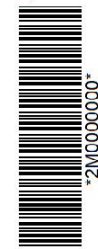
Note: X0 at the bottom

Outline: 303B111GEUY74C

NEMA CLASS AA DRY TYPE TRANSFORMER

Meets DOE 2016 efficiency

X3 H3 X2 H2 X1 H1
- - - - -
X3 H3 X2 H2 X1 H1
- - - - -



2M000000



3M000000

X0