



# Transformer

by ABB



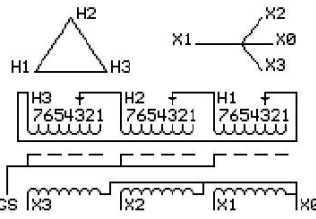
\*1M000000\*

**Catalog Number** 9T11C1882G03 **Type** QL

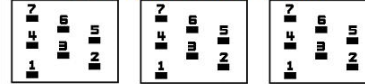
30.0 KVA 60 HZ 3 PH 3.8 % IMP  
40 C AMB. 150 C RISE 220 C SYSTEM IS-19C

PRIMARY (H) 440 VOLTS (LINE-LINE)  
SECONDARY (X) 220 VOLTS (LINE-LINE)  
127 VOLTS (LINE-NEUTRAL)

JUMPER CONNECTION TAP	VOLTS
1	462
2	452
3	440
4	429
5	419
6	406
7	396



### COIL TAP ARRANGEMENT



**NET WGT** 353 LB  
**INSPECTION & FINAL TEST**  
 160.1 Kg  
 89990  
 UX72C  
**NOG** N139!  
 092021



LISTED 769G

ELECTROSTATIC GROUND SHIELD IN EACH PHASE

ENCLOSURE TYPE 2 (IP20). OR RAINPROOF TYPE 3R (IP22) WHEN PROVIDED SHIELD 9T18Y1072G06  
 SUITABLE FOR NONSINUSOIDAL CURRENT LOAD WITH K-FACTOR NOT TO EXCEED 13

BEFORE HANDLING, INSTALLING AND OPERATING, SEE INSTRUCTION 475A667AAP001  
 COPPER CONDUCTOR PRIMARY: 10 KV BIL SECONDARY: 10 KV BIL  
 IN ACCORDANCE WITH NEC SECTION 450-9, ALLOW AT LEAST SIX INCHES CLEARANCE FOR VENTILATION.  
 CHECK ADDITIONAL NEC AND LOCAL CODE

ASSEMBLED IN MEXICO

X3 H3 X2 H2 X1 H1 X0

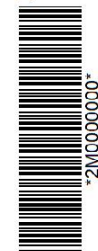
Note: standard

Outline: 303B111GEUXP72C

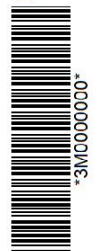
NEMA CLASS AA DRY TYPE TRANSFORMER

Meets DOE 2016 efficiency

X0  
 X1 H1  
 X2 H2  
 X3 H3



\*2M000000\*



\*3M000000\*