

**GE Transformer**

—  
**by ABB**



**Catalog Number**      **Type QL**  
**9T12A1003G03**

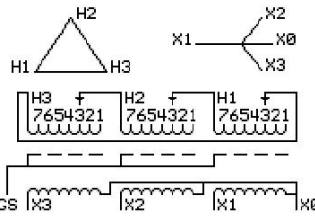
**45.0 KVA    60 HZ    3 PH    3.2 % IMP**  
**40 C AMB.    150 C RISE    220 C SYSTEM    IS-19C**

*Note: Design is based on 75.00KVA & 150C Rise 5.3% Imp.*

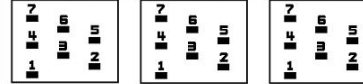
**PRIMARY (H)    480 VOLTS (LINE-LINE)**  
**SECONDARY (X)    208 VOLTS (LINE-LINE)**  
**120 VOLTS (LINE-NEUTRAL)**

**JUMPER CONNECTION**

TAP	VOLTS
1	502
2	491
3	480
4	469
5	455
6	444
7	433



**COIL TAP ARRANGEMENT**



**NET WGT**  
561 LB  
254.5 Kg  
89037  
UY74A

**INSPECTION & FINAL TEST**  
**NOG**  
N137!  
091021



ELECTROSTATIC GROUND SHIELD IN EACH PHASE

ENCLOSURE TYPE 2 (IP20). OR RAINPROOF TYPE 3R (IP22) WHEN PROVIDED SHIELD 9T18Y1074G06  
**SUITABLE FOR NONSINUSOIDAL CURRENT LOAD WITH K-FACTOR NOT TO EXCEED 20**

**BEFORE HANDLING, INSTALLING AND OPERATING, SEE INSTRUCTION 475A667AAP001**  
ALUMINUM CONDUCTOR    PRIMARY: 10 KV BIL    SECONDARY: 10 KV BIL  
IN ACCORDANCE WITH NEC SECTION 450-9, ALLOW AT LEAST SIX INCHES CLEARANCE FOR VENTILATION.  
**CHECK ADDITIONAL NEC AND LOCAL CODE**

**ASSEMBLED IN MEXICO**

**X3    H3    X2    H2    X1    H1**

**Note: X0 at the bottom**

Outline: 303B111GEUYP74A

**NEMA CLASS AA DRY TYPE TRANSFORMER**

Meets DOE 2016 efficiency

\*1M000000\*

**X3    H3    X2    H2    X1    H1**

\*2M000000\*

\*3M000000\*