



# Transformer

by ABB



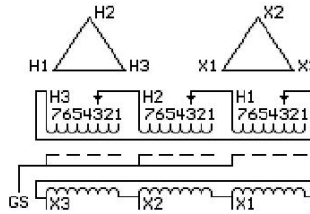
\*1M000000\*

**Catalog Number**      **Type QL**  
**9T12A1232G34**

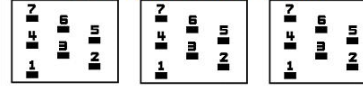
**30.0 KVA    60 HZ    3 PH    2.9 % IMP**  
**40 C AMB.    115 C RISE    220 C SYSTEM    IS-19C**

**PRIMARY (H)    480 VOLTS (LINE-LINE)**  
**SECONDARY (X)    400 VOLTS (LINE-LINE)**

JUMPER CONNECTION TAP	VOLTS
1	505
2	492
3	480
4	468
5	455
6	443
7	431



### COIL TAP ARRANGEMENT



**NET WGT**  
444 LB  
201.4 Kg

**INSPECTION & FINAL TEST**  
NOG  
N137!  
091021



ELECTROSTATIC GROUND SHIELD IN EACH PHASE

ENCLOSURE TYPE 2 (IP20). OR RAINPROOF TYPE 3R (IP22) WHEN PROVIDED SHIELD 9T18Y1072G06  
SUITABLE FOR NONSINUSOIDAL CURRENT LOAD WITH K-FACTOR NOT TO EXCEED 20

BEFORE HANDLING, INSTALLING AND OPERATING, SEE INSTRUCTION 475A667AAP001  
ALUMINUM CONDUCTOR    PRIMARY: 10 KV BIL    SECONDARY: 10 KV BIL  
IN ACCORDANCE WITH NEC SECTION 450-9, ALLOW AT LEAST SIX INCHES CLEARANCE FOR VENTILATION.  
CHECK ADDITIONAL NEC AND LOCAL CODE

ASSEMBLED IN MEXICO

X3 H3 X2 H2 X1 H1 -

Note: standard

Outline: 303B111GEUXP73A

NEMA CLASS AA DRY TYPE TRANSFORMER

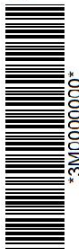
Meets DOE 2016 efficiency

X3 H3 X2 H2 X1 H1



\*2M000000\*

X3 H3 X2 H2 X1 H1



\*3M000000\*