



# Transformer

by ABB



\*1M000000\*

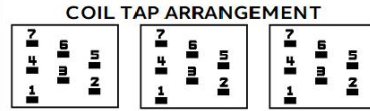
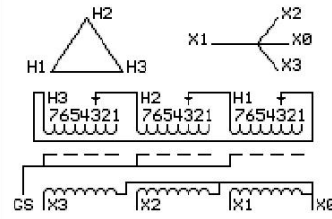
**Catalog Number** 9T12C1001G03  
**Type QL**

15.0 KVA 60 HZ 3 PH 3.9 % IMP  
40 C AMB. 150 C RISE 220 C SYSTEM IS-19C

*Note: Design is based on 15.00KVA & 115C Rise 3.9% Imp.*

PRIMARY (H) 480 VOLTS (LINE-LINE)  
SECONDARY (X) 208 VOLTS (LINE-LINE)  
120 VOLTS (LINE-NEUTRAL)

JUMPER CONNECTION TAP	VOLTS
1	504
2	492
3	480
4	468
5	456
6	444
7	432



**NET WGT** 230 LB  
**INSPECTION & FINAL TEST**  
104.3 Kg  
**NOG** N139!  
89467  
**UX71C** 092021



LISTED 769G

ELECTROSTATIC GROUND SHIELD IN EACH PHASE

ENCLOSURE TYPE 2 (IP20). OR RAINPROOF TYPE 3R (IP22) WHEN PROVIDED SHIELD 9T18Y1071G06

SUITABLE FOR NONSINUSOIDAL CURRENT LOAD WITH K-FACTOR NOT TO EXCEED 20

BEFORE HANDLING, INSTALLING AND OPERATING, SEE INSTRUCTION 475A667AAP001

COPPER CONDUCTOR PRIMARY: 10 KV BIL SECONDARY: 10 KV BIL

IN ACCORDANCE WITH NEC SECTION 450-9, ALLOW AT LEAST SIX INCHES CLEARANCE FOR VENTILATION.

CHECK ADDITIONAL NEC AND LOCAL CODE

ASSEMBLED IN MEXICO

X3 H3 X2 H2 X1 H1 X0

Note: standard

Outline: 303B111GEUXP71C

NEMA CLASS AA DRY TYPE TRANSFORMER

Meets DOE 2016 efficiency

X0	-	-	-	-	-	-	-	-	-	-
H1	-	-	-	-	-	-	-	-	-	-
X1	-	-	-	-	-	-	-	-	-	-
H2	-	-	-	-	-	-	-	-	-	-
X2	-	-	-	-	-	-	-	-	-	-
H3	-	-	-	-	-	-	-	-	-	-
X3	-	-	-	-	-	-	-	-	-	-



\*2M000000\*



\*3M000000\*