



# Transformer

by ABB



\*1M000000\*

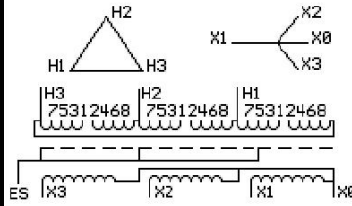
**Catalog Number**      **Type QL**  
**9T12C1004G33**

75.0 KVA    60 HZ    3 PH    3.8 % IMP  
40 C AMB.    115 C RISE    220 C SYSTEM    IS-19C

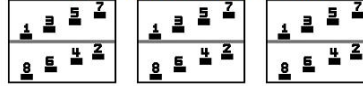
*Note: Design is based on 112.5KVA & 150C Rise 5.2% Imp.*

PRIMARY (H)      480 VOLTS (LINE-LINE)  
SECONDARY (X)    208 VOLTS (LINE-LINE)  
                          120 VOLTS (LINE-NEUTRAL)

JUMPER CONNECTION	
TAP	VOLTS
1-2	503
2-3	492
3-4	480
4-5	469
5-6	457
6-7	446
7-8	435



### COIL TAP ARRANGEMENT



**NET WGT**  
790 LB  
358.3 Kg  
89503  
DY75C

**INSPECTION & FINAL TEST**  
NOG  
N137!  
091021



ELECTROSTATIC GROUND SHIELD IN EACH PHASE

ENCLOSURE TYPE 2 (IP20). OR RAINPROOF TYPE 3R (IP22) WHEN PROVIDED SHIELD 9T18Y1074G06

SUITABLE FOR NONSINUSOIDAL CURRENT LOAD WITH K-FACTOR NOT TO EXCEED 20

BEFORE HANDLING, INSTALLING AND OPERATING, SEE INSTRUCTION 475A667AAP001

COPPER CONDUCTOR      PRIMARY: 10 KV BIL      SECONDARY: 10 KV BIL

IN ACCORDANCE WITH NEC SECTION 450-9, ALLOW AT LEAST SIX INCHES CLEARANCE FOR VENTILATION.

CHECK ADDITIONAL NEC AND LOCAL CODE

NEMA CLASS AA DRY TYPE TRANSFORMER

Meets DOE 2016 efficiency

### ASSEMBLED IN MEXICO

X3 - X2 - X1 - -  
- H3 - H2 - H1

Note: X0 at the bottom

Outline: 303B111GEDYP75C

X3 - X2 - X1 - - H3 - H2 - H1

X3 - X2 - X1 - - H3 - H2 - H1

X0

X3 - X2 - X1 - - H3 - H2 - H1

X3 - X2 - X1 - - H3 - H2 - H1

X0

\*2M000000\*

\*3M000000\*